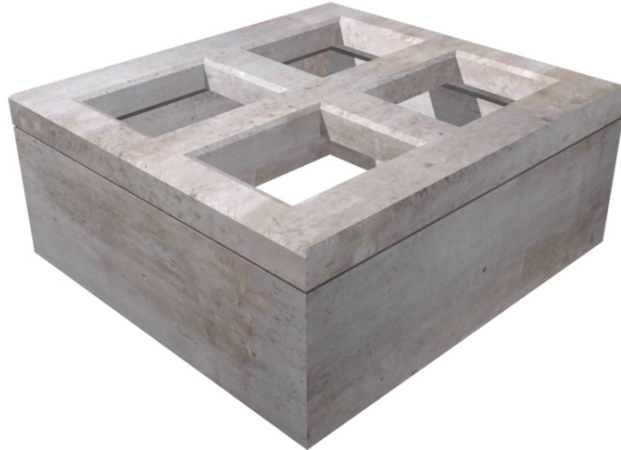


## Precast Reinforced Concrete Switchgear Pads



### 1. Scope

This standard covers the requirements for precast reinforced concrete switchgear pad assemblies.

Each installation requires a riser and a cover.

This standard applies to the following Seattle City Light (SCL) stock numbers:

Stock No.	Description	Weight, Nominal (lb)
014546	Two Compartment Switchgear Pad Riser	3150
014547	Two Compartment Switchgear Pad Cover	950
014548	Four Compartment Switchgear Pad Riser	4250
014549	Four Compartment Switchgear Pad Cover	3100

### 2. Application

Precast reinforced concrete switchgear pads are used as platforms for padmount switchgear.

The two-compartment switchgear pad assembly is used for S&C Electric type PMH 5.

The four-compartment switchgear pad assembly is used for S&C Electric type PMH 9, 10, 11 or 12.

Due to their size, risers and covers will not be stocked in SCL inventory. Engineers and the Civil Crew Chief must order and specify delivery of these items.

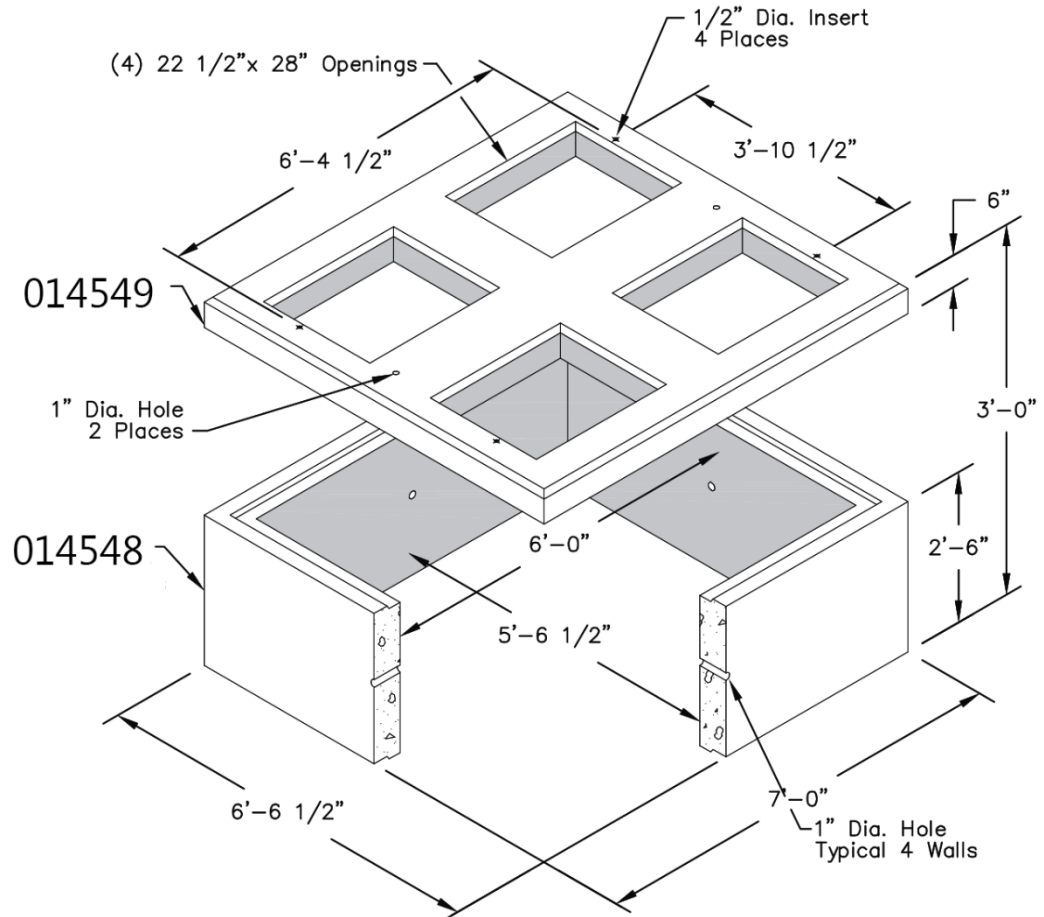
Standards Coordinator  
Quan Wang

Standards Supervisor  
John Shipek

Unit Director  
Andrew Strong



**Figure 3.2b. Four-Compartment Switchgear Pad**



**4. Issuance**

Stock Unit: EA

**5. Approved Manufacturer**

Stock No.	Description	Oldcastle Infrastructure Part No.
014546	Two Compartment Switchgear Pad Riser	0020730
014547	Two Compartment Switchgear Pad Cover	0020740
014548	Four Compartment Switchgear Pad Riser	0020750
014549	Four Compartment Switchgear Pad Cover	0020760

**6. References**

**SCL Construction Standard 0724.50;** "Customer Requirements for Padmount Transformer Services, Looped Radial System"

**SCL Material Standard 7203.21;** "Precast Reinforced Concrete Structure, General"

## 7. Sources

<https://oldcastleinfrastructure.com>

**SCL Construction Standard U10-5.2**; “Pad Construction for Pad-Mount Switchgear”

**Wang, Quan**; SCL Standards Engineer, originator, and subject matter expert for 7203.78  
([quan.wang@seattle.gov](mailto:quan.wang@seattle.gov))