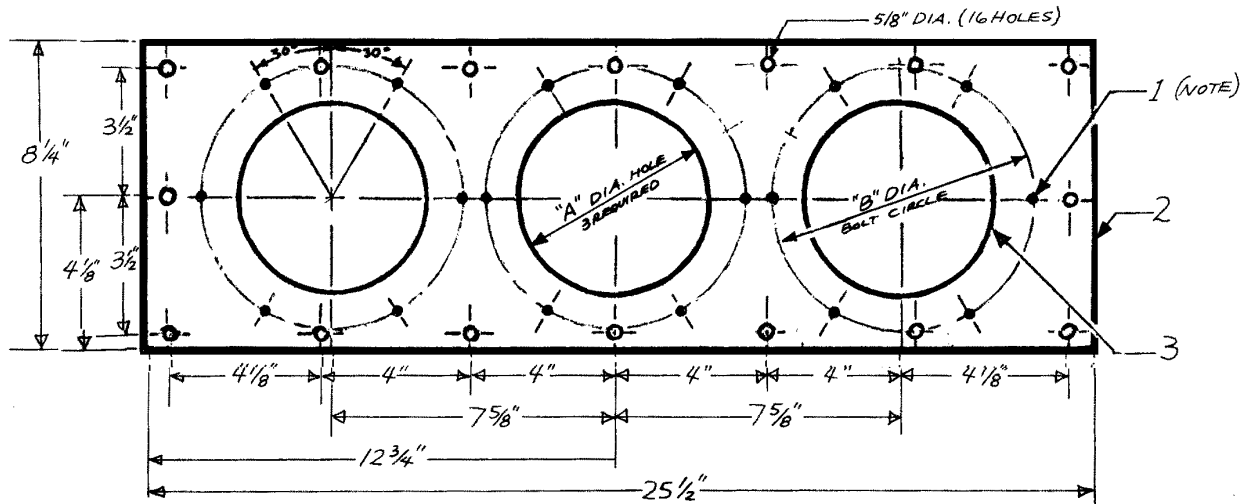


**Terminator Adapter Plate to Replace  
3/C, 27-kV Pothead G&W TRA 3855C**



**NOTES:**

1. Blind drill and tap 3/8" -16NC x 1/2" deep. Install 18, 3/8" -16NC x 1-1/2" bronze studs. Protect studs with Caplug® or equal. Seat stud lightly.
2. 5/8-inch steel plate.
3. Finish Coat:  
**Adapter Plate for PATR Terminators.** Prime outside (stud side) with DuPont LF-1858S and paint with black Prime inside with epoxy primer (DuPont Corlar #824S) and paint with epoxy white (Impron #508U).

Stock Unit: EA

Adapter Plate Stock #	Termination Device	Bushing Stock #	"A"	"B"
686202	PATR 1802	686482	4-3/8"	5-7/8"
686204	PATR 1873	686461	5-1/8"	6-5/8"

standards coordinator

Brett Hanson

standards supervisor

John Shipek

unit director

Andrew Strong