

Fire Protection Control Cabinets



1. Scope

This standard covers the requirements for assembled and wired fire protection control cabinets.

This standard applies to Seattle City Light (SCL) Stock Number 682897.

2. Application

Fire protection control cabinets are used to monitor conditions in spot network vaults and send trip signals to network protectors, if necessary.

See SCL NCB-141 for installation guidelines.

3. Industry Standards

Cabinets shall meet the applicable requirements of the following industry standard:

NEMA Standards Publication 250-2003; Enclosures for Electrical Equipment (1000 Volts Maximum)

4. Requirements

Cabinet fabrication, assembly, and electrical details shall conform to Seattle City Light drawings DU-769 (see Appendix A) and DU-770 (see Appendix B).

Cabinet materials listed in DU-770 may be substituted with equal or better components at the manufacturer's option.

Standard Coordinator

Handwritten signature of the Standard Coordinator.

Standards Engineering Supervisor
Brett Hanson

Handwritten signature of Brett Hanson.

Division Director
Bob Risch

Handwritten signature of Bob Risch.

Cabinet assembly and electrical details shall meet the requirements of Table 4.

Table 4. Cabinet Assembly and Electrical Details

Attribute	Requirement
National Electrical Manufacturers Association (NEMA) Enclosure	Type 4
Enclosure Dimensions	
Height	30 in
Width	24 in
Depth	10 in
Enclosure Color	ANSI gray

One copy each of drawings DU-769 and DU-770 (see Appendix A and Appendix B) shall be placed inside each cabinet door.

5. Marking

Each cabinet shall be marked with:

- Manufacturer identification
- Date of manufacture (month and year)

6. Packaging

Cabinets shall be shipped completely assembled.

Cabinets shall be individually packaged to prevent damage during shipping, handling, and inside storage.

Each cabinet package shall be legibly marked with:

- Manufacturer identification
- Product description
- Date of manufacture (month and year)
- Seattle City Light stock number

Each shipping container shall be legibly marked with the following information:

- Manufacturer identification
- Product description
- Seattle City Light purchase order number

7. Issuance

Stock Unit: EA

8. Approved Manufacturers

OZZ Electric (formerly SME Inc. of Seattle); www.ozzelectric.com

9. References

Seattle City Light Drawing DU-770; Fire Protection Control Cabinet, NEMA Type 4 Assembly and Electrical Details Without Ground Detection, Revision 13, June 1, 2000

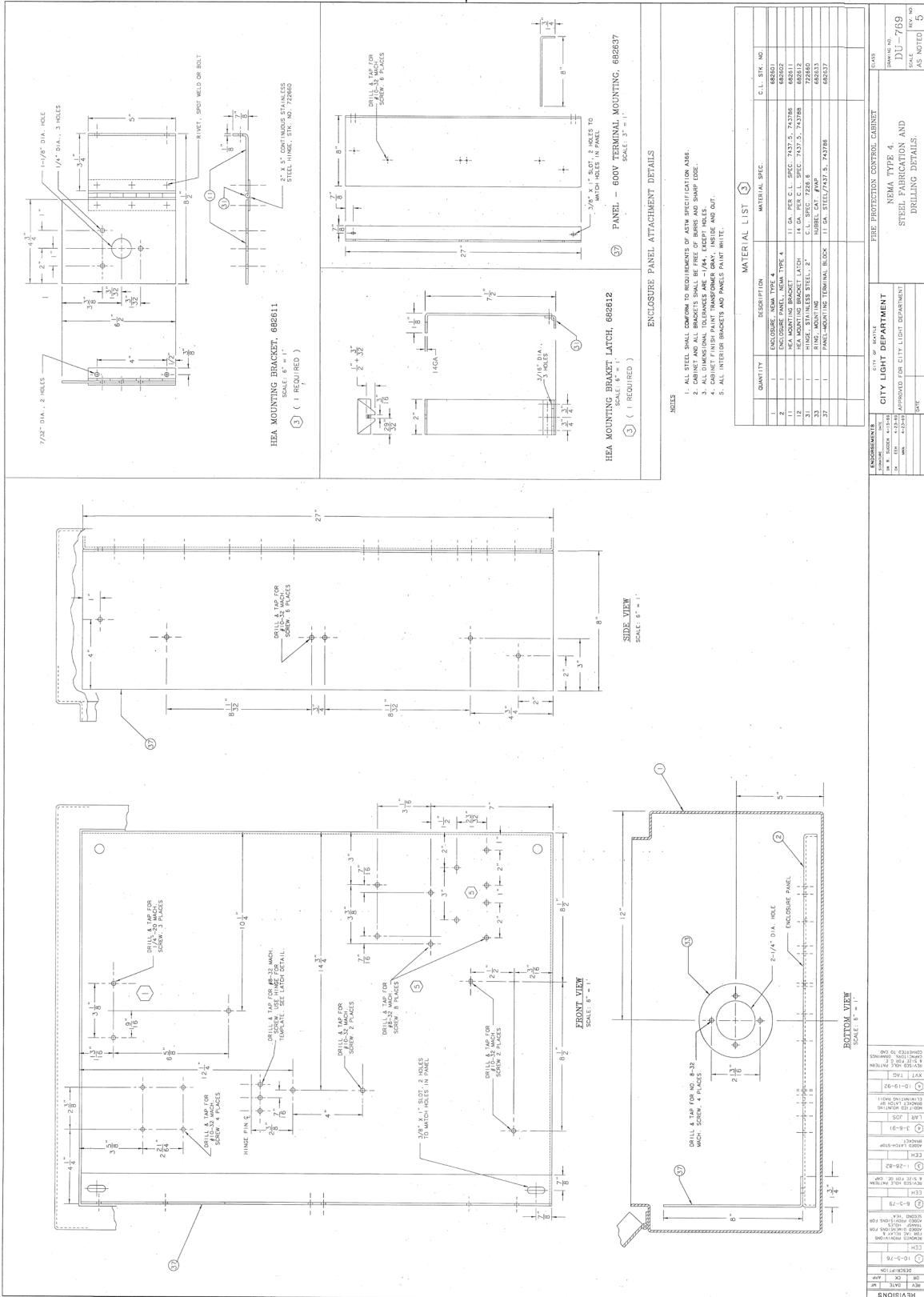
Seattle City Light Drawing DU-769; Fire Protection Control Cabinet, NEMA Type 4 Steel Fabrication and Drilling Details, Revision 8, January 30, 2002

SCL Construction Guideline NCB-141; "Fire Detection Installation Details and Wiring Diagram for Wet Vaults"

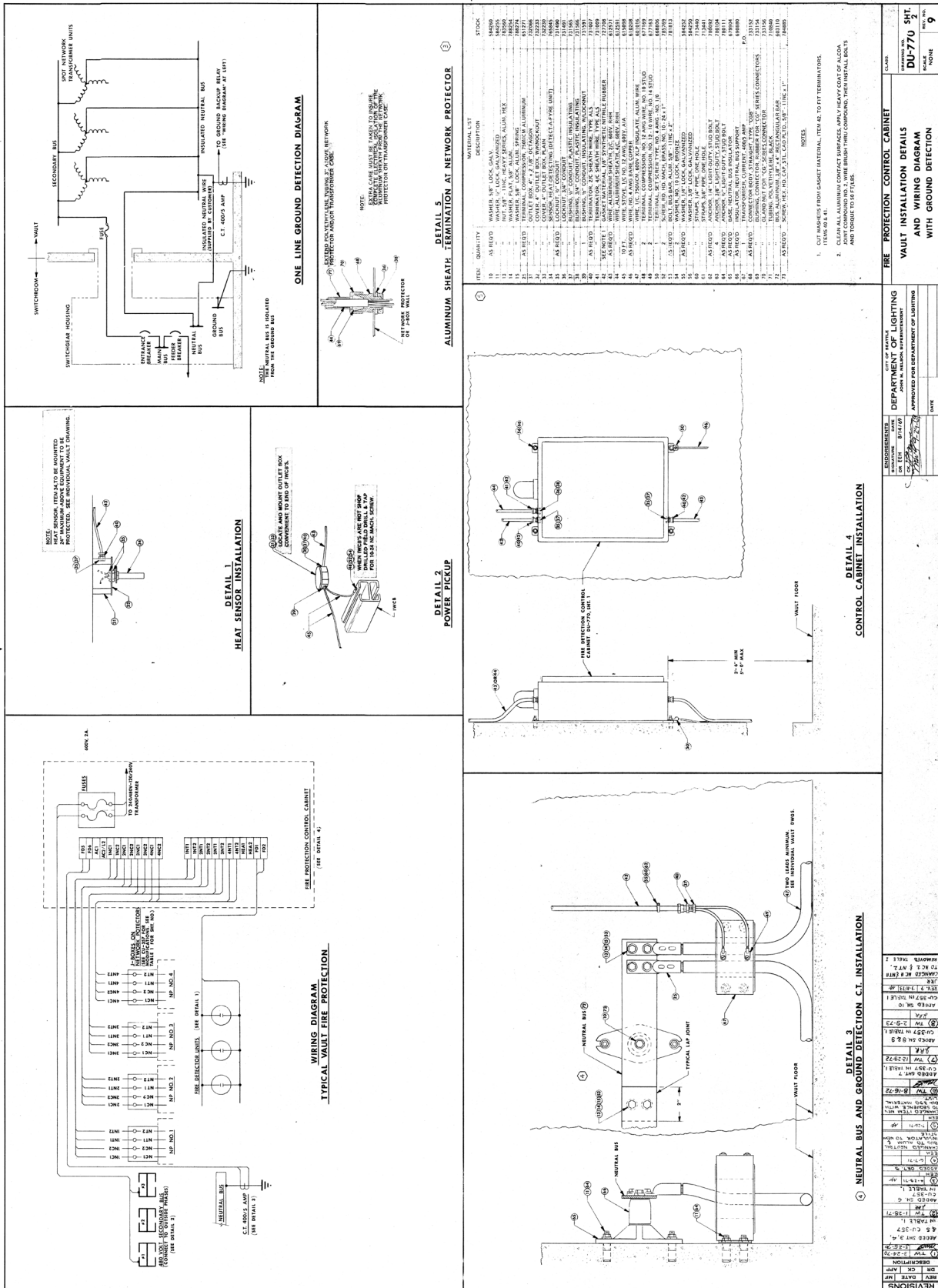
10. Sources

Shipek, John; SCL Standards Supervisor and originator of 6858.15

Appendix A. Seattle City Light Drawing DU-769



Appendix B. Seattle City Light Drawing DU-770



REVISIONS

NO.	DATE	DESCRIPTION
1	11/29/17	ISSUED FOR CONSTRUCTION
2	08/15/23	REVISION TO MATERIAL LIST
3	08/15/23	REVISION TO DETAIL 1
4	08/15/23	REVISION TO DETAIL 2
5	08/15/23	REVISION TO DETAIL 3
6	08/15/23	REVISION TO DETAIL 4
7	08/15/23	REVISION TO DETAIL 5

APPROVED FOR CONSTRUCTION

DEPARTMENT OF LIGHTING

DATE

SCALE: NONE

SHEET: DU-770 SHT 2

TOTAL SHEETS: 9

MICROFILMED