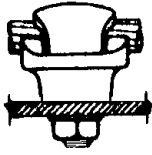


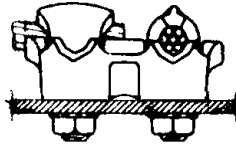
MATERIAL STANDARD

CONDUCTOR FITTINGS TAP LUGS - COPPER CABLE TO FLAT



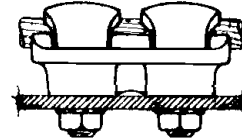
6761-1.tif

Fig. 1
(one way)



1-3/4"

Fig. 2
(two way)



1-3/4"

Fig. 3
(one way)

Terminal, Tap Lug shall be of the configurations shown and shall have a forged or cast body of high conductivity copper alloy. The eye bolt shall be high-strength silicon bronze or aluminum bronze. Threads shall be 1/2 x 13NC, Class 2 fit. The bolt shall be provided with a nonferrous nut and shakeproof washer. The terminals shall meet the applicable requirements of ANSI/NEMA CC-1, Electrical Power Connectors for Substations.

Reference: ANSI/NEMA CC-1

Stock Unit: EA

Stock Number	Conductor Range	Fig. No.	Bus Bar, In.	Approved Manufacturers					
				Anderson	Penn Union	So States	Burndy	Anixter Royal	Dossert
676102	#8 sol-2/0 str	1	1/4	TLS-32	LSN-2/0N	UN-4048	QGFL26B2	12206	QL-13-50
676104	#6 sol-250 kcmil	1	1/4	TLS-42	LSN-025N	UN-4151	QGFL29B1	12208	QL-25
676115	#8 sol-2/0 str	2	3/4	TLD-32L	LDN-2/0N2E	UNN-4048T	--	--	Q2L-13-50E
676117	#6 sol-250 kcmil	2	3/4	TLD-52L	LDN-025N2E	UNN-4151T	--	--	Q2L-125E
676120	1/0 sol-500 kcmil	3	3/4	TLD-62L	LDN-050NE	UNN-4656T	--	--	Q2L-50E
676123	2/0 sol-1000 kcmil	3	3/4	TLD-89L	LDN-100NE	--	--	--	--

ORIGINATOR	STANDARDS COORDINATOR	STANDARDS SUPERVISOR	UNIT DIRECTOR
<i>Jim S. Horn</i>	<i>Charles L. Shaffer</i>	<i>John C. Skinner</i>	<i>Betty Robini</i>