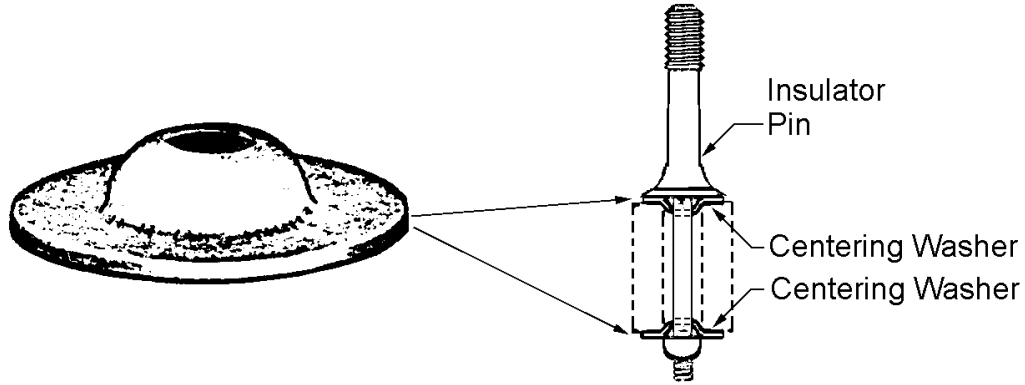


MATERIAL STANDARD

WASHERS, CENTERING



Centering Washers are used to adapt the shank of forged steel pins to pin-holes bored for wood pins in crossarms. Carbon steel washers shall be made of 1-gauge, hot-rolled steel strip meeting the requirements of ASTM A 425. Malleable iron shall conform to ASTM Specification A 47.

The washers shall be galvanized after fabrication, in accordance with ASTM A 153.

Packaging shall be in accordance with EEI Packaging Standards.

Reference Specification: ASTM A 425, A 47, A 153, EEI Packaging Standards, latest revisions

Stock Unit: EA

Stock Number	Washer Diameter, Inches	Hole Diameter, Inches	Approved Manufacturers	
			Joslyn	Kortick
584375	2-3/4	13/16	P140A	K1632

ORIGINATOR	STANDARDS COORDINATOR	STANDARDS SUPERVISOR	UNIT DIRECTOR
<i>Jim S. Horn</i>	<i>Charles L. Shaffer</i>	<i>John C. Skinner</i>	<i>Harold J. J...</i>