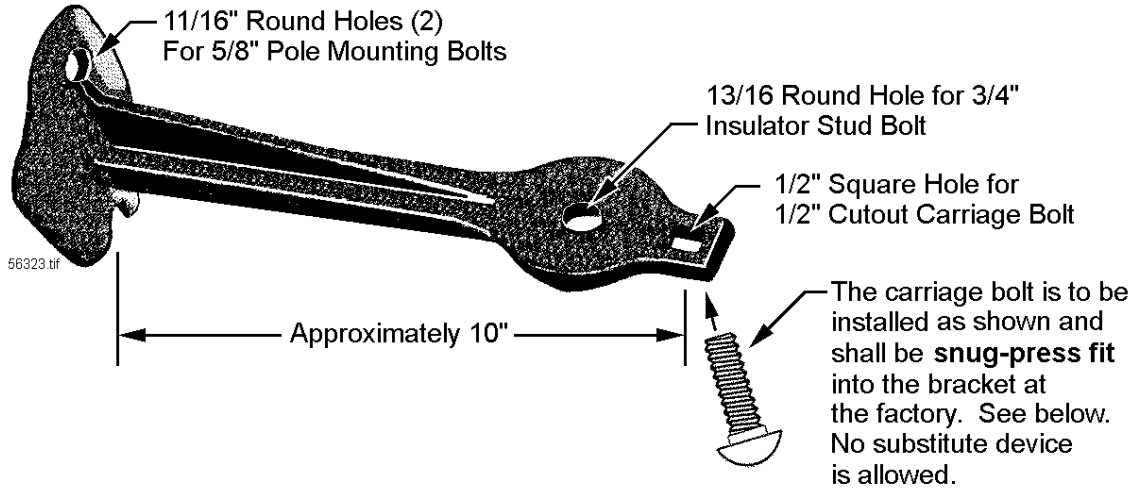


BRACKET - POLE MOUNTING CUTOUT



Pole-Mounting Cutout Brackets, of the configuration shown, are used to mount 26 kV open-type cutouts, with single 1/2-inch carriage bolt, directly to pole. The bracket shall be made of malleable iron conforming to ASTM A47, carbon steel conforming to ASTM A569, or ductile iron conforming to ASTM A536.

The brackets shall be free of sand holes, sharp edges, or other imperfections, and shall be galvanized after fabrication in accordance with ASTM A153.

Brackets shall include an assembled carriage bolt assembly kit. Carriage bolt shall be oriented upward on the bracket.

The primary use of this bracket is for cutout mounting; the flat area with a 13/16" hole for Insulator mounting capability is optional. Bid acceptance will be based on low bid for cutout use.

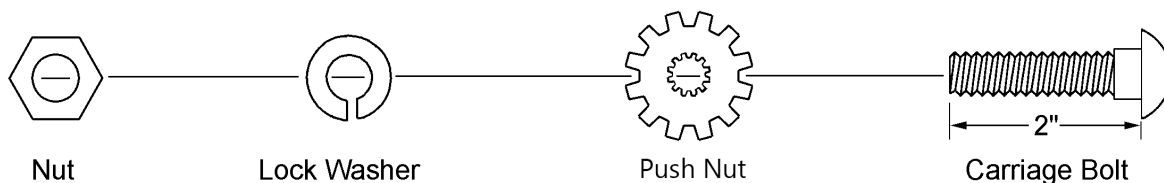
Reference Specifications: ASTM A47, ASTM A153, ASTM A536, ASTM A569, latest revisions.

Stock Unit: EA

| Stock No. | Approved Manufacturers | Catalog No. |
|-----------|--|-----------------------|
| 563222 | MacLean Travis Pattern & Foundry Inc. | I-AC-75B IGB-7-SCL |

The manufacturer catalog number listed is for reference only. It is not intended to indicate compliance with this specification.

Carriage Bolt Assembly:



Standards Coordinator
Quan Wang

Standards Supervisor
John Shipek

Unit Director
Andrew Strong