

STRAIGHT APPARATUS BUSHING WITH BOLTABLE ADAPTER PLATE FOR 13 kV NETWORK TRANSFORMER

1. Application:

For conversion of G & W pothead terminations to straight 600 ampere apparatus bushing on 13 kV network transformers and other apparatus. Used with gasket Stock Number: 686386. See Stock Catalog for further information.

Also for use with 26kV Network Transformers when welding in adapter ring (Stock Number 686250, Material Standard 6862.5).

2. Manufacture

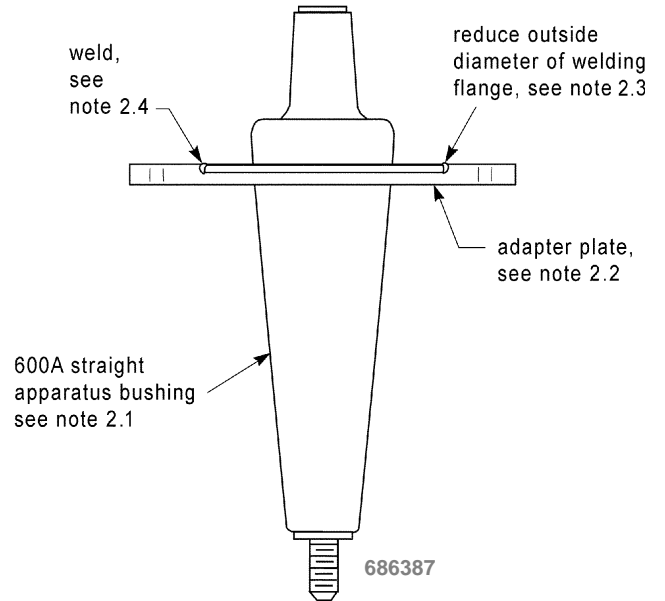
- 2.1 600A straight apparatus bushing - SCL Stock Number 686392 (Material Standard 6863.17), Elastimold K650-T1.
- 2.2 Adapter plate, SCL Stock No. 686213
- 2.3 Reduce OD of welding flange embedded in bushing to 3-3/4" to provide clearance at bolt circle holes of bolttable flange.
- 2.4 Weld all around stainless steel flange on bushing. Be sure to provide a heat sink while welding to prevent heat damage to the epoxy bushing.
- 2.5 Test the weld for leaks in the shop test fixture using *Leak Tec* with nitrogen at 3 lbs. pressure.
- 2.6 Perform dielectric test: One minute at 150 percent of rated voltage.
- 2.7 Package in plastic bags.

3. Bushing with Adapter Plate:

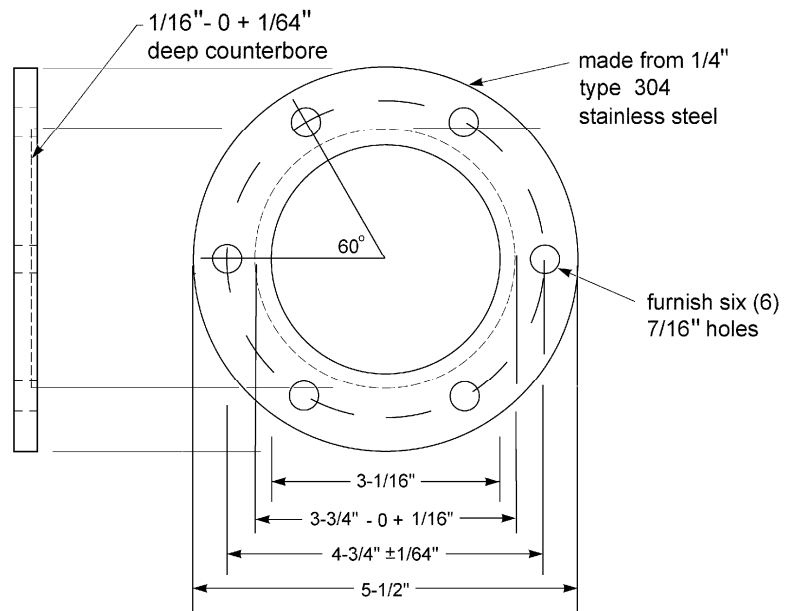
Seattle City Light Shops Made
Stock Unit: EA
Stock Number: 686387

4. Adapter Plate only:

Seattle City Light Shops Made
Stock Unit: EA
Stock Number: 686213

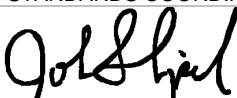
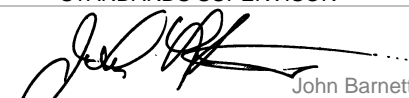
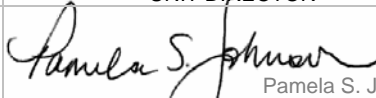


Bushing with Adapter Plate



686213

Adapter Plate Only

STANDARDS COORDINATOR	STANDARDS SUPERVISOR	UNIT DIRECTOR
 John Shipek	 John Barnett	 Pamela S. Johnson