

Gaskets, Terminator Adapter Plate



1. Scope

This standard covers the requirements for terminator adapter plate gaskets.
This standard applies to Seattle City Light (SCL) Stock No. 686221.

2. Application

Terminator adapter plate gaskets are used with 26 kV terminator adapter plates (Stock Nos. 686202, 686204, and 686205) and "flowerpots" (Stock No. 686208).

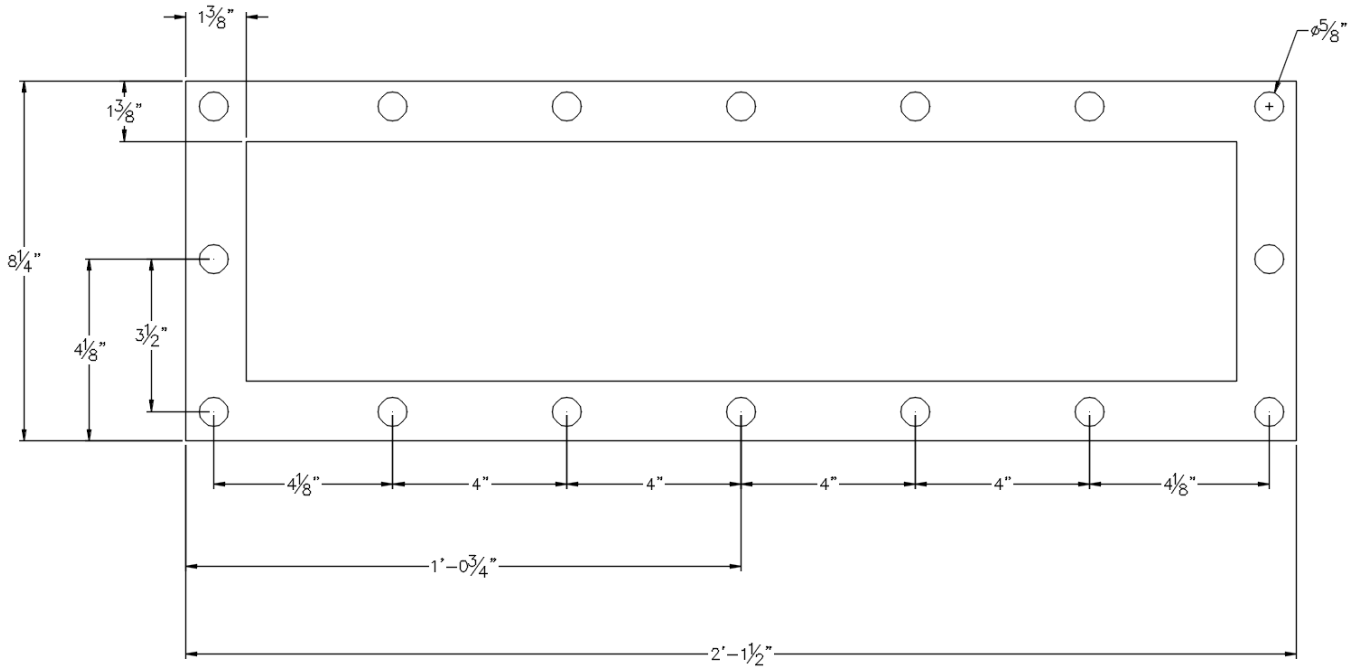
3. Requirements

Gaskets shall be manufactured from 3/8-inch synthetic (Buna-N) rubber. See SCL 7276.9.

Gaskets shall have the dimensions shown in Figure 3.



Figure 3. Gasket Dimensions



4. Packaging

Gaskets shall be packaged to prevent damage during shipping, handling, and storage.

Each standard package shall be legibly marked with the following information:

- Manufacturer identification
- Product description
- SCL stock number
- Quantity

Each shipping container shall be legibly marked with the following information:

- SCL purchase order number

5. Issuance

Stock Unit: EA

6. Approved Manufacturers

Seattle City Light Shop

7. References

SCL Material Standard 7276.9; "Gasket Material, Cork and Synthetic (Buna-N) Rubber Composition"

8. Sources

SCL Stock Catalog page 70-49; March 12, 2001

Lu, Curtis; SCL Standards Engineer and originator of 6862.35 (curtis.lu@seattle.gov)

SCL Material Standard 6862.3; "Terminator Adapter Plate to Replace 3/C, 27-kV
Pothead G&W TRA 3855C"