

CONSTRUCTION STANDARD

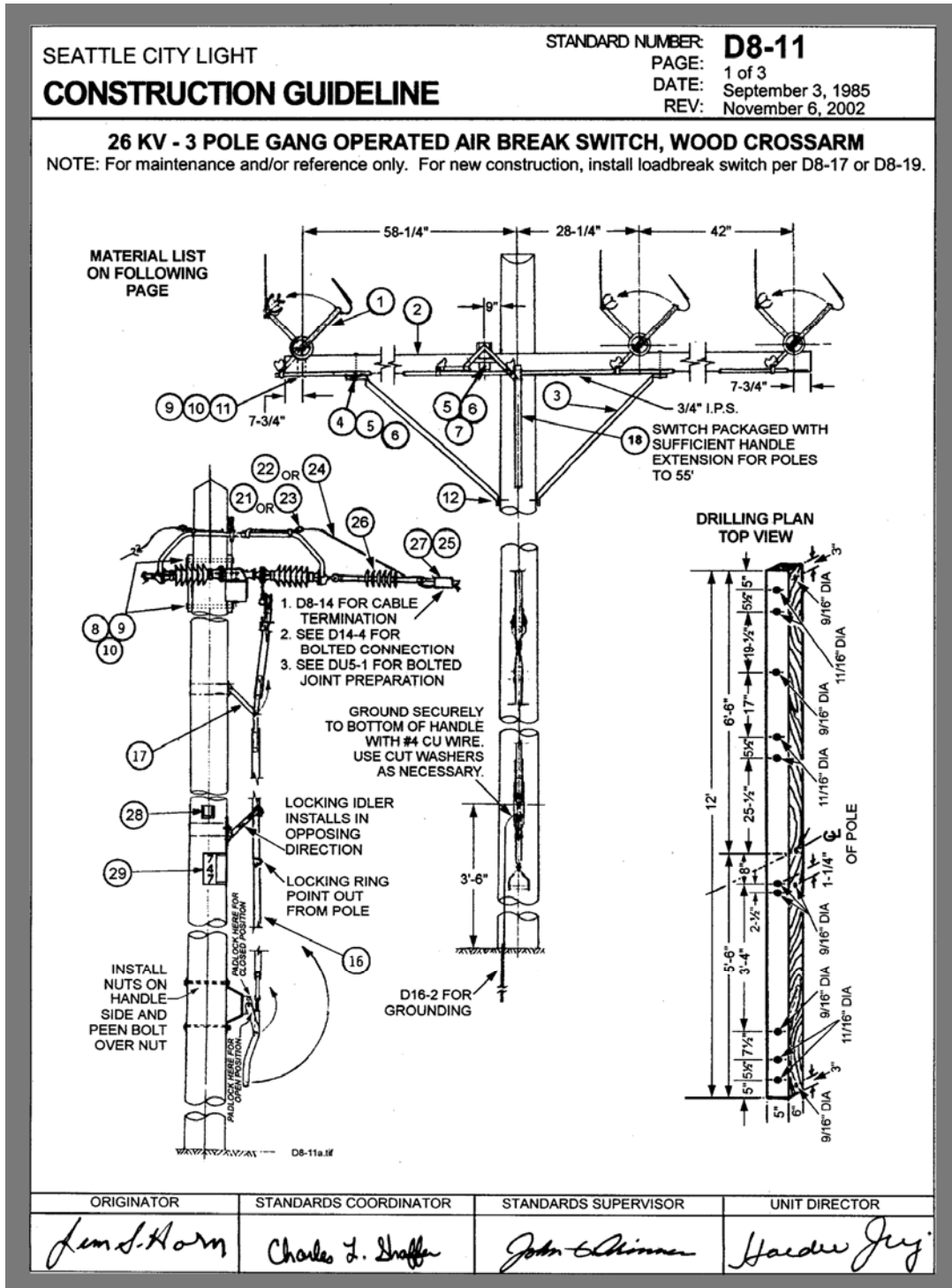
standard number: **D8-11**

superseding: November 6, 2002

effective date: July 3, 2009

page: 1 of 3

note: D8-11 retained for maintenance and reference only, for new construction, install loadbreak switch per D8-17 or D8-19.



standards coordinator	standards manager	unit director
 John Shipek	 John Shipek	 Pamela S. Johnson

CONSTRUCTION STANDARD

26 kV, 3 Pole, Gang Operated, Air Break Switch, Wood Cross Arm

standard number: **D8-11**

superseding: November 6, 2002

effective date: July 3, 2009

page: 2 of 3

note: D8-11 retained for maintenance and reference only, for new construction, install loadbreak switch per D8-17 or D8-19.

SEATTLE CITY LIGHT
CONSTRUCTION GUIDELINE

STANDARD NUMBER: **D8-11**

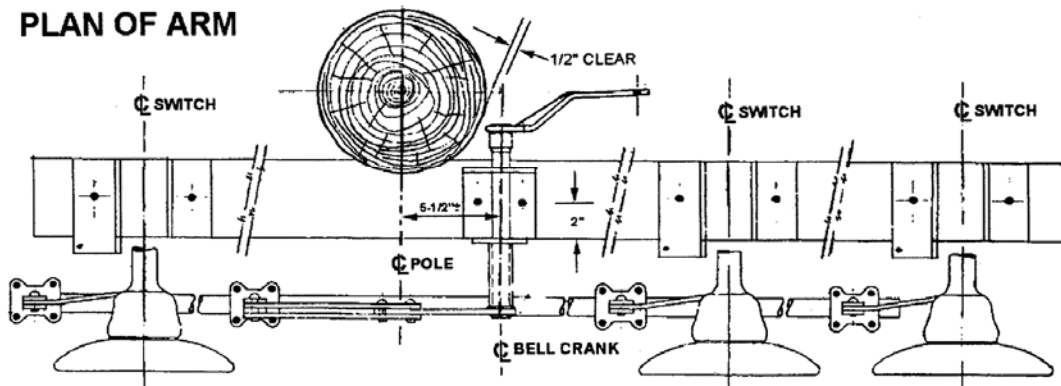
PAGE: 2 of 3

See D8-12 for standard installations.

Item	Req'd	Description	Stock No.
1	1	SWITCH, 600 amp (2 bolt pad)	250137
		SWITCH, 1200 amp (4 bolt pad)	250139
2	1	CROSSARM, 26 kV switch	540221
3	2	BRACE, 5', special	563013
4	2	BOLT, 1/2" x 7", galv, mach.	780808E
5	7	WASHER, 1/2", galv, cut	585025E
6	5	WASHER, 1/2", coil spring	584257E
7	3	BOLT, 1/2" x 6", galv, mach.	780806E
8	1	BOLT, 3/4" x L, galv, mach.	780875E-781072E
9	10	WASHER, 2-1/4" square	585135E
10	7	WASHER, 3/4", coil spring	584267E
11	6	BOLT, 5/8" x 8", galv, mach.	780840E
12	4	SCREW, 1/2" x 6", galv, lag	785265E
13	2	PADLOCK, switch, SNM-1	-----
14	2	BOLT, 5/8" x L, galv, mach.	780844E-781040E
16	1	HANDLE EXTENSION, metal	254978
17	*	ASSEMBLY, guide base	254980
18	*	HANDLE EXTENSION, fiberglass	254987
19	3'	CHAIN, weldless sash	726992
20	12	BOLT ASSY, 1/2" x 2-1/2", stnls stl	782041
21	6	TERMINAL, compression, 954 AAC	651224
22	42'	WIRE, AAC, 954 kcmil	600126
23	6	TERMINAL, comp, 500 kcmil, cu	650267
24	42'	WIRE, 500 kcmil, cu, S.D.	610397
25	6	AMPACT TAP, per D14-1	
26	6	INSULATOR, susp, composite	690233
27	6	CLAMP, D.E. strain, 1/0-300 stl	693370
		3/0-477 al	694292
		795-954 al	694294
28	1	HOLDER, switch tag	581799
29	1	BOARD, number, CL shop made per D8-10	

* as required

PLAN OF ARM



90° SPECIAL BELL CRANK INSTALLATION STOCK # 254939

(1) OFFSET ARM ADDITIONAL 6" TO RIGHT (ABOVE DWG.) OR OFFSET ARM WITH 2 UNITS ON LEFT.

(2) KPF BRACE MUST BE LOCATED TOWARD FACE OF POLE TO AVOID CONFLICT WITH OPERATING ROD.

note: D8-11 retained for maintenance and reference only, for new construction, install loadbreak switch per D8-17 or D8-19.

**SEATTLE CITY LIGHT
CONSTRUCTION GUIDELINE**

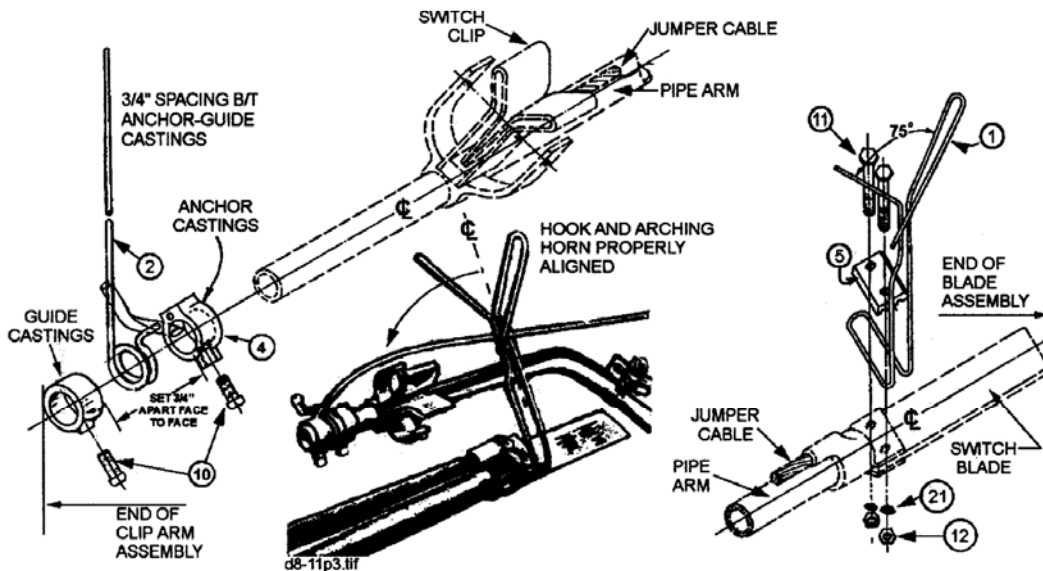
STANDARD NUMBER: **D8-11**

PAGE: 3 of 3

QUICK BREAK ASSEMBLY

QUICK BREAK ROD MUST BE SET EXACTLY ON CENTERLINE OF HOOK, AS HOOK POSITION CAN NOT BE ADJUSTED. THE ARCHING HORN SHOULD STAND VERTICALLY WITHOUT ADDING ANY COMPRESSION THRU CASTING. TIGHTEN GUIDE CASTING ONLY TO TAKE OUT LOOSENESS.

NOTE: ALL AIR BREAK SWITCHES SHOULD BE UPDATED TO INCORPORATE THE QUICK-BREAK ASSEMBLY. CHECK WITH ENGINEERING. STOCK NO. 264851.



PARTS LIST TYPE "A" SWITCHES

Item	Description
1	BERYLLIUM COPPER HOOK
2	BERYLLIUM COPPER SPRING 15-1/2" long
3	GUIDE CASTING
4	ANCHOR CASTING
5	GROOVED WASHER
10	1/2" X 1" GALV. SET SCREWS
11	5/16" X 1-3/8" EVERDUR MACHINE BOLTS
12	5/16" X 1-3/8" EVERDUR NUTS
21	5/16" LOCK WASHER, EVERDUR