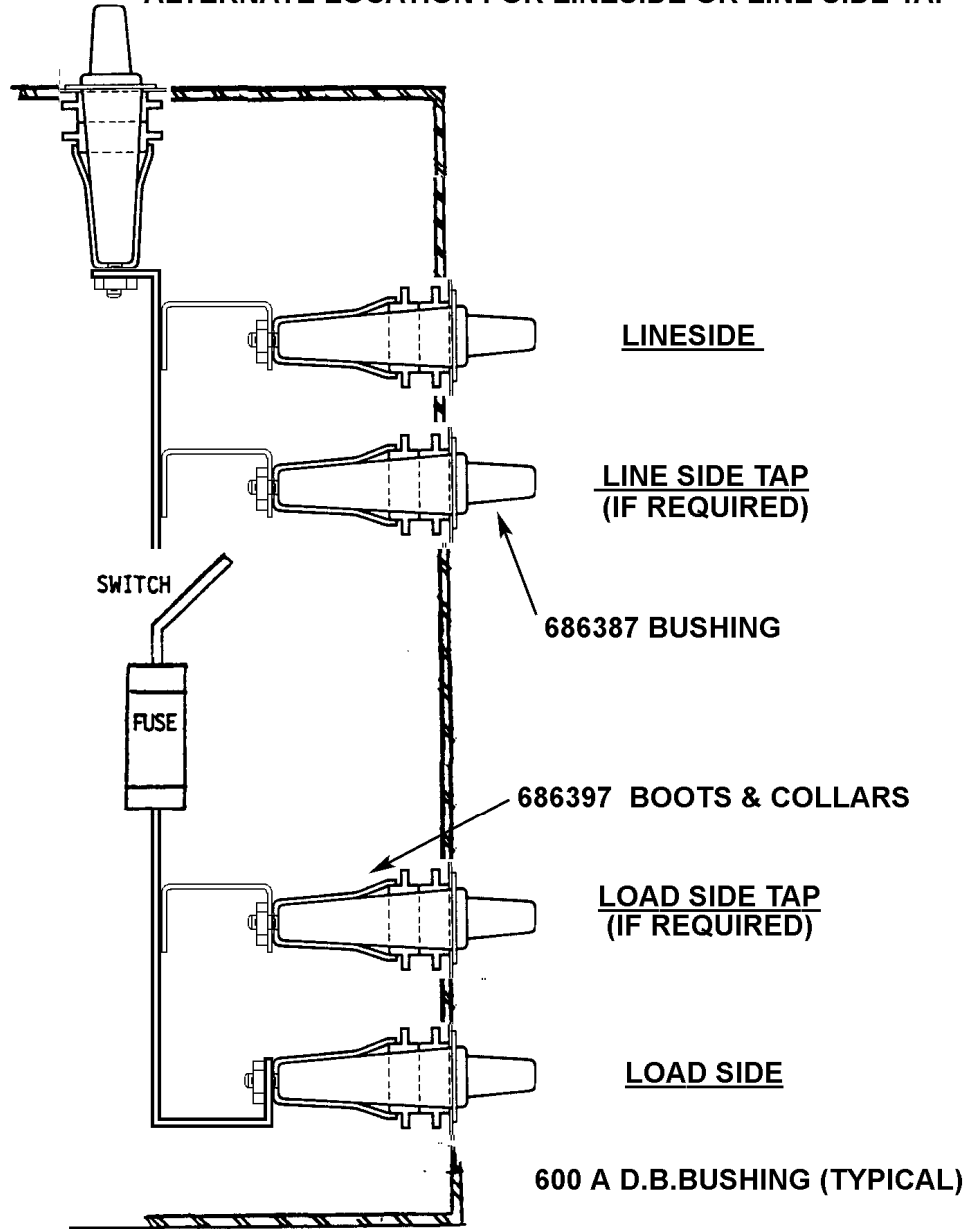


**TERMINATION OF 3/C 15 KV XLP INSULATED, PVC JACKETED CABLE  
USING 600 A DEAD BREAK ELBOWS ON AIR INSULATED METALCLAD SWITCHGEAR  
ALTERNATE LOCATION FOR LINESIDE OR LINE SIDE TAP**



**NOTES:**

1. Only one phase shown. All three phases are identical.
2. Support cables per Construction Guideline NCI-170
3. Trifurcate three-phase, three conductor cable per Construction Guideline NSP-110
4. See NSP-320 for installation of straight line connection
5. Refer to switchroom drawing for specific location of line-side, line-side tap, or load tap terminators.
6. Make all connections between terminators and switchgear.

ORIGINATOR	STANDARDS COORDINATOR	STANDARDS SUPERVISOR	UNIT DIRECTOR
<i>Keith "BAG HOG" Rosand</i>	<i>Jim S. Horn</i>	<i>John Schinner</i>	<i>Betty Robin</i>