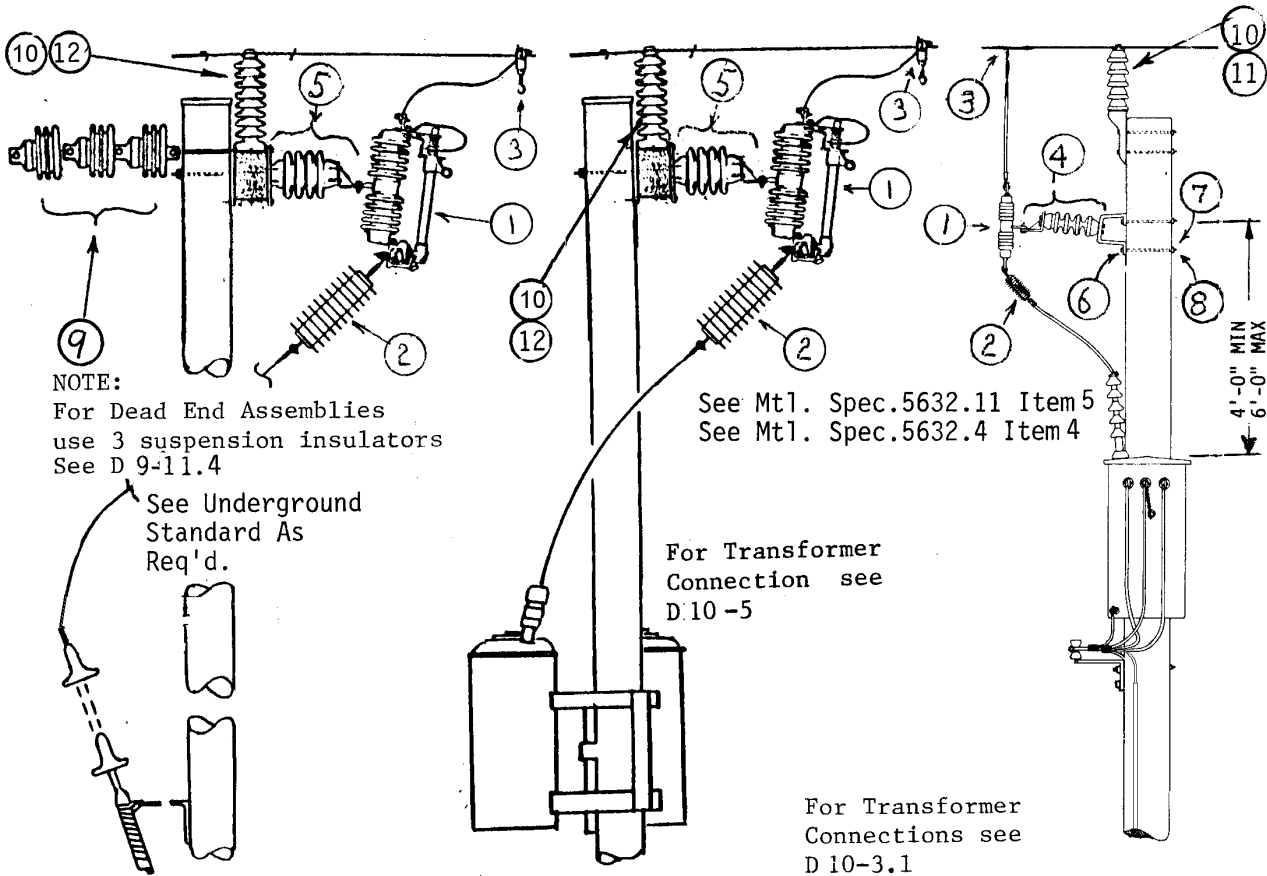


FUSED CUTOUT MOUNTING – CONTAMINATED ATMOSPHERE



MATERIAL LIST

ITEM	QTY	DESCRIPTION	STOCK NO.
1	1	Cutout, 27 kV, polymer	013739
2	1	Fault limiter, 27/15 kV	Per DU11-1
3	1	Clamp, hot-line, Cu. For Al, See D14-6	2/0-#8 580725 E 400-#6 580727
4	1	Bracket Assy, pole mtd. CO - contaminated area	563223
5	1	Bracket Assy, crossarm mtd. CO - contaminated area	563227
6	2	Bolt, 5/8" machine, galvanized	780840E-47 E
7	2	Washer, flat, 2-1/4" x 2-1/4"	585135 E
8	2	Washer, 3/4" coil spring lock	584267 E
9	3	Insulator, strain	690208
10	1	Insulator, 46 kV post	690161
11	1	Short stud	696826 E
12	1	Long stud	696828 E

NOTES:
 Return cutout standoff bracket to salvage. For limiter mounting details, see D11-2.

STANDARDS COORDINATOR	STANDARDS SUPERVISOR	UNIT DIRECTOR
 Yaochiem Chao	 John Shipek	 Darnell Cola