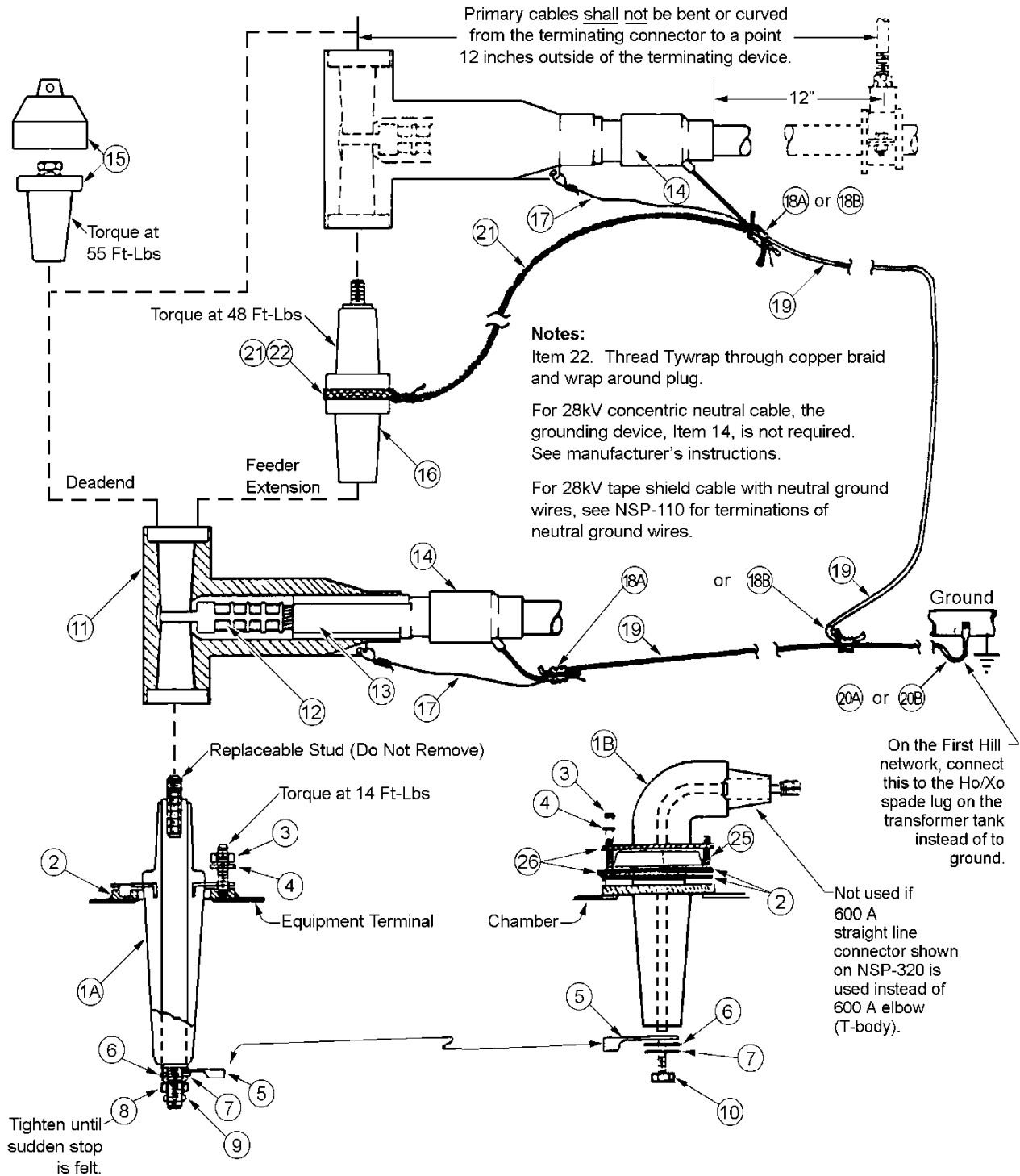


600 AMPERE PRIMARY EQUIPMENT TERMINATION



Standards Coordinator
 Quan Wang

Standards Supervisor
 John Shipek

Unit Director
 Darnell Cola

Material List

Item	Quantity	Description	Stock No.
1A	3	Bushing, 600 ampere, bolted	686387
1B ***	3	Bushing, 600 ampere, bolted, 90 degree	687009
2 ***	3 (6)	Bushing, Gasket	686386
3	18	Nut, 3/8-16 hex, zinc-coated	782984
4	18	Washer, lock, 3/8"	788123
5	3	Connector, ring, compression, #2 AWG	677188
6	3	Washer, stainless steel, flat, 5/8"	788031
7	3	Washer, Belleville, 5/8"	788300
8	3	Nut, 5/8-11, aluminum	783560
9	3	Nut, Jam, 5/8-11, brass	783311
10	3	Bolt, aluminum, 5/8-11 x 1"	781819
11	3 or 6 *	Elbow, BLR, 600 ampere, 125 kV BIL	686350
12	3	Compression connector, aluminum	See Table 1
13	3	Cable adapter	See Table 1
14	3	Grounding device	686512
15	3	Plug and cap, basic insulating	686356
16	3 *	Connector plug	686353
17	20	Wire, #14 AWG, soft round bare copper	610218
18A	3	Connector, pressure tap	677326
18B	3	Connector, pressure tap	677325
19	30	Wire, #2 AWG, bare copper stranded	610434
20A	1	Connector for aluminum ground bus	651255
20B	1	Connector for copper ground bus	677071
21	15 *	Wire, tinned, copper braid	618614
22	3 *	Strap, adjustable tie	735811
23	3 *	Bushing extension (not shown)	686380
24	1 **	Plate, termination adapter (not shown)	686205
25 ***	18	Stud, full thread 3/8-16 x 2-3/8"	786600
26 ***	6	Adapter, gasket, ring	686280

* Items 16, 21, and 22 are required for bushing extension item 23, required for additional feeder extensions with three additional Item 11.

** Use Item 24 when replacing three-phase potheads.

*** 90 degree bushing requires 2 gasket adapter rings, two gaskets and 3/8-16 X 2-3/8" studs for mounting. A removable 5/8-11 aluminum stud is needed for bushing inside terminal chamber to replace contact spade stud with flat sides.

Table I

15 kV Cable Copper Tape	Cable Stock No.	OD Over Insulation (in)	item 12	item 13	item 14
			Compression Connector	Cable Adapter	Grounding Device
#1 AWG	613523	0.725 - 0.835	686375	686310	686512
2/0	613520	0.775 - 0.885	686377	686314	686512
3/0	613526	0.825 - 0.935	686378	686315	686512
350 kcmil	613530	0.980 - 1.115	686366	686361	686512
500 kcmil	613532	1.040 - 1.175	686362	686361	686512
500 kcmil EPR *	010128	1.125 - 1.185	686362	686365	686512
750 kcmil	613534	1.285 - 1.395	686349	686352	686512
1000 kcmil EPR triplex flat strap	623670	1.515 - 1.575	010136	686372	686512
* Controlled diameter cable for use in 3-1/2" clay tile and other limited diameter ducts.					
28 kV Cable Copper Tape	Cable Stock No.	OD Over Insulation (in)	Compression Connector	Cable Adapter	Grounding Device
#1 AWG	613540	0.875 - 0.985	686375	686370	686512
350 kcmil	613543	1.160 - 1.305	686366	686365	686512
28 kV Cable Flat Strap	Cable Stock No.	OD Over Insulation (in)	Compression Connector	Cable Adapter	Grounding Device
350 Al kcmil	012099	1.215 - 1.275	686366	686365	686512
500 kcmil	012100	1.335 - 1.395	686362	686352	686512
750 kcmil	012101	1.520 - 1.580	686349	686348	686512
1000 kcmil	012102	1.670 - 1.730	686398	686372	686512
28 kV Cable Drain Wire	Cable Stock No.	OD Over Insulation (in)	Compression Connector	Cable Adapter	Grounding Device
350 Al kcmil	613613	1.226 - 1.286	686366	686365	686512
500 kcmil	613615	1.290 - 1.390	686362	686352	686512
750 kcmil	613618	1.490 - 1.585	686349	686348	686512
1000 kcmil	613619	1.665 - 1.740	686398	686372	686512
28 kV Cable Concentric Neutral	Cable Stock No.	OD Over Insulation (in)	Compression Connector	Cable Adapter	Grounding Device
#1 AWG Al	–	0.880 - 0.980	686375	686370	not required
1/0 Solid Al	602025	0.915 - 0.975	686375	686370	not required
350 kcmil Al	–	1.160 - 1.305	686366	686365	not required

1. Lubricate parts slightly with silicon grease provided in kit. **No substitutions.**
2. Torque connector plugs, Item 16, from 44 to 51 ft-lb using Elastimold spanner wrench, #600 SW, Stock No. 686358.
3. Torque insulating or dead-end plugs to between 50 to 60 ft-lb using 1-in socket.
4. Connect Item 20A or 20B permanently to vault ground bus.
5. When grounding device has #2 AWG lead, use Item 18A connector. When grounding device has #6 AWG lead, use Item 18B connector. Compress with MD-6 tool and W-C die.