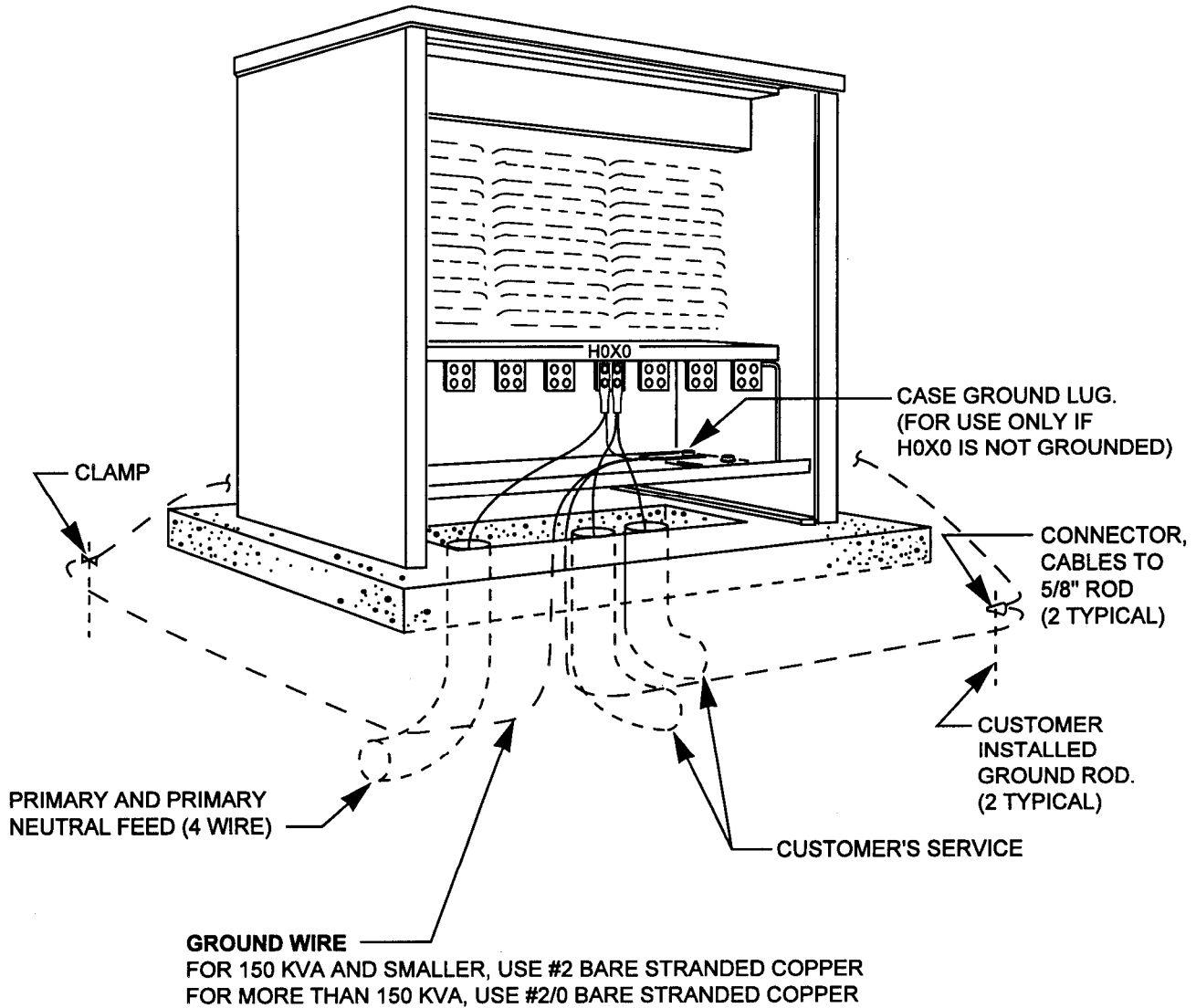


GROUNDING of PADMOUNT SPECIALTY & AUTOTRANSFORMERS



NOTES:

1. Case ground, system neutral and ground rods (or wire) must be bonded together.
2. All conductors shall be copper and no larger than 500 kcmil.
3. Ground rods shall be copper clad steel, 5/8" x 8' (stock No. 564238E)
4. Pad design and construction is on an individual basis.
5. Bolt transformer down with S/S Kwik Bolts.

ORIGINATOR	STANDARDS COORDINATOR	STANDARDS SUPERVISOR	UNIT DIRECTOR
<i>Keith "BAG-HOG" Roseand</i>	<i>Jim S. Horn</i>	<i>John Chinner</i>	<i>Betty Robin</i>