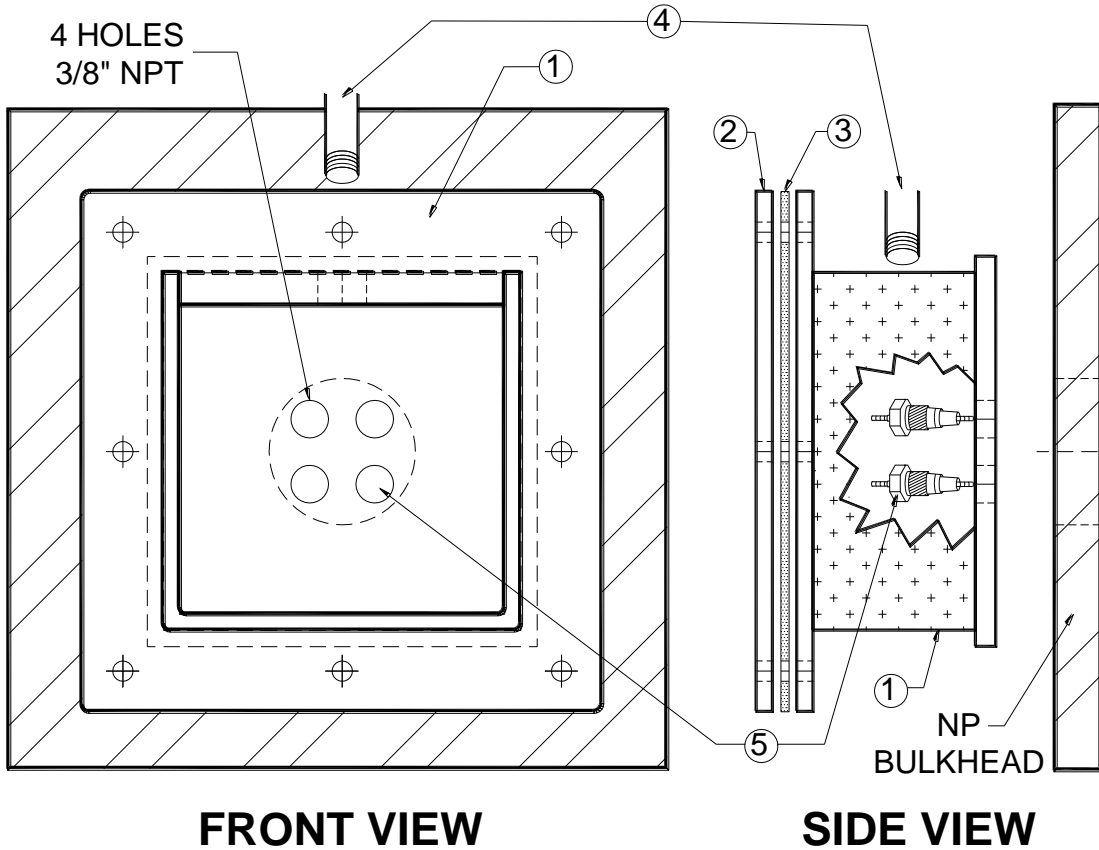


**FIRE DETECTION SYSTEM
 RETROFIT NETWORK PROTECTOR FOR WATERPROOFING**



FRONT VIEW

SIDE VIEW

Item	Qty.	Description	Material	Stock No.
1	1	JUNCTION BOX, Steel	Mild steel	SCL shop made Per C.L. Mat'l. Std. 7326.0
2	1	COVER, junction box	Mild steel	SCL shop made Per C.L. Mat'l. Std. 7326.0
3	1	GASKET, Junction Box	Buna-N	SCL shop made Per C.L. Mat'l. Std. 7326.0
4	As Req'd.	CONDUIT, 3/4"	-	See NCB-140 or NCB-141
5	4	BUSHING, Feed-Thru, "Spark Plug"	-	Combustion Service & Equipment Co.
6	8	CAP SCREW, 1/4" x1" UNC	Si Bronze	784505E
7	8	WASHER, Lock, 1/4"	Si Bronze	788101E
8	8	NUT Hex, 1/4" - 20	Si Bronze	783231E

INSTALLATION

1. Locate clear area on side of NP to mount the junction box
2. Use 2-1/2" hole saw to cut opening (for junction box) on NP.
3. Center junction box on 2-1/2" hole and weld into place. Weld must be waterproof.
4. Install feed thru connectors and conduit and make connections.
5. Install gasket and cover.

ORIGINATOR	STANDARDS COORDINATOR	STANDARDS SUPERVISOR	UNIT DIRECTOR
<i>Keith "BHAG-HOG" Rozand</i>	<i>Jim S. Horn</i>	<i>John Schinner</i>	<i>Betty Robin</i>