

## Customer Requirements for Vault Signage

### TRANSPORTATION AGREEMENT

AN EQUIPMENT TRANSPORTATION AGREEMENT EXISTS FOR THIS VAULT. IF TRANSFORMER(S) OR RELATED EQUIPMENT NEEDS TO BE MOVED INTO OR OUT OF BUILDING, THE BUILDING OWNER IS RESPONSIBLE FOR MOVING IT.

#### 1. Scope

This standard covers the requirements for vault signage.

Selection of appropriate sign types, and sign text necessary for site-specific conditions, are outside the scope of this standard.

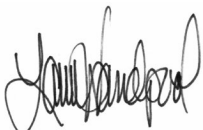
#### 2. Application

Specific signage is required to communicate vault conditions, such as when an Equipment Transportation Agreement (ETA) exists between a customer and Seattle City Light (SCL) for transformers or related equipment installed in a vault.

ETA signage is not provided by SCL. The customer is responsible for procuring signage per this standard and the specific sign text communicated in the SCL Service Letter.

Section 4 shows the Equipment Transportation Agreement sign. Section 5 shows examples of other signs that have been used in the past. These signs should be considered examples only.

Standard Coordinator  
Laura Vanderpool



Standards Engineering Supervisor  
Brett Hanson



Division Director  
Bob Risch



### 3. Requirements

Signage shall be as described below:

<b>Material</b>	Phenolic resin sheet
<b>Dimensions</b>	8-in x 8-in minimum. Increase size to maintain 1-inch border and 1-inch space between lines of text
<b>Color</b>	
<b>Sign</b>	Red
<b>Lettering</b>	White
<b>Lettering style and size</b>	
<b>Style</b>	All caps, sans serif font, engraved
<b>Size</b>	Title text: 1-in high, nominal Body text: 1/2-in high, nominal
<b>Thickness (in)</b>	1.6 mm, nominal
<b>Mounting</b>	4 holes, 5/16-in diameter, ± 1/16-in, on corners

---

### 4. Equipment Transportation Agreement Sign

Figure 4. Equipment Transportation Agreement Sign



### 5. Sign Examples

Figure 5a. Danger High Voltage Sign Example



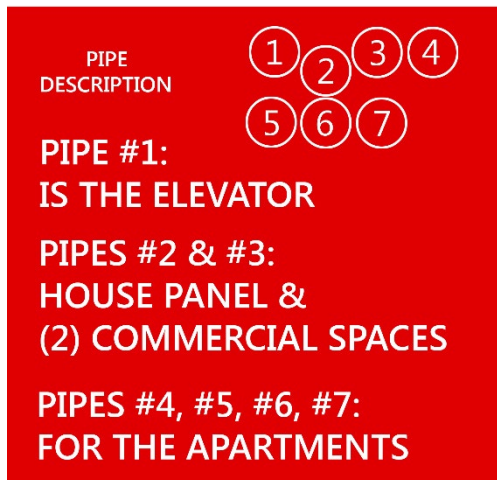
**Figure 5b. Heat Probe Sign Example**



**Figure 5c. Service Entrance Sign Example**



**Figure 5d. Service Entrance Sign for Cable in Conduit Example**



**Figure 5e. PT Deck Sign Example**



**6. Approved Manufacturers**

<b>Manufacturer</b>	<b>Part No.</b>
Designer Decal	–
Electromark	SAY7651.25

## 7. Sources

**Customer Electric Service Installation Process (CESIP) Section 12.30**; "Equipment Transportation Agreement Procedure," SCL Energy Delivery Operations, June 2008

**Tilley, Kathy**; SCL Electrical Engineering Support Specialist, originator of 7651.25