

## Pulling Irons and Accessories



### 1. Scope

This standard covers the requirements for pulling irons and their accessories.

This standard applies to the following Seattle City Light (SCL) stock numbers:

Stock No.	Description
720235	Pulling iron
720236	In-floor cover
013525	Void block outs (pair)

### 2. Application

Pulling irons are built into vault walls to act as permanent attachment points for pulling cable.

Void block outs are used when building pulling irons into cast-in-place and walk-in vault walls.

Covers are used to cover pulling irons recessed into vault floors.

The strength limitation of a pulling iron is primarily determined by how it is internally secured to the wall that it is built into.

### 3. Industry Standards

ASTM A276 - Standard Specification for Stainless Steel Bars and Shapes

### 4. Requirements

#### 4.1 Pulling Irons

Pulling irons shall be fabricated from 7/8-inch diameter, type 304 stainless steel, conforming to ASTM A276.

Pulling irons shall have a minimum working strength rating of 10,000 pounds with a safety factor of 2:1.

Standard Coordinator  
Curtis Lu

Standards Engineering Supervisor  
John Shipek

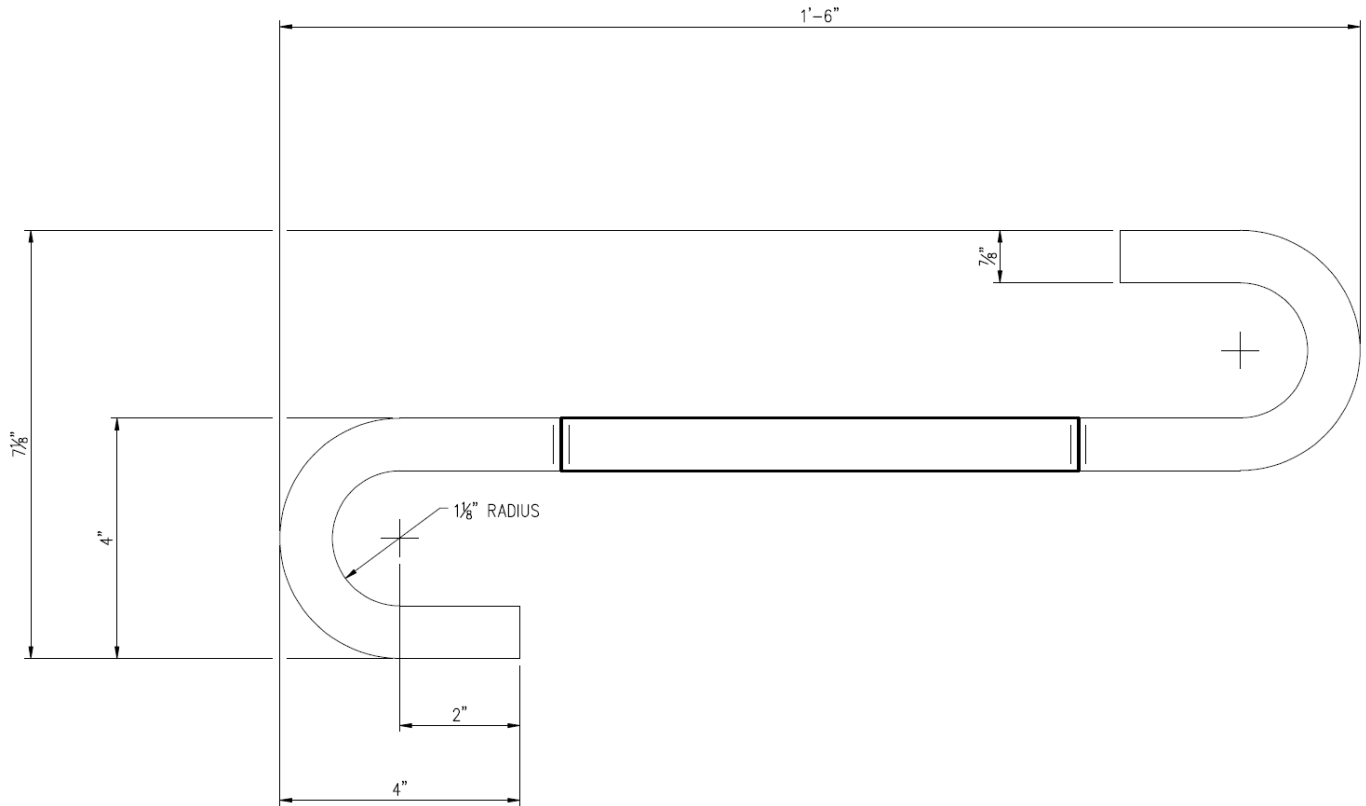
Division Director  
Andrew Strong



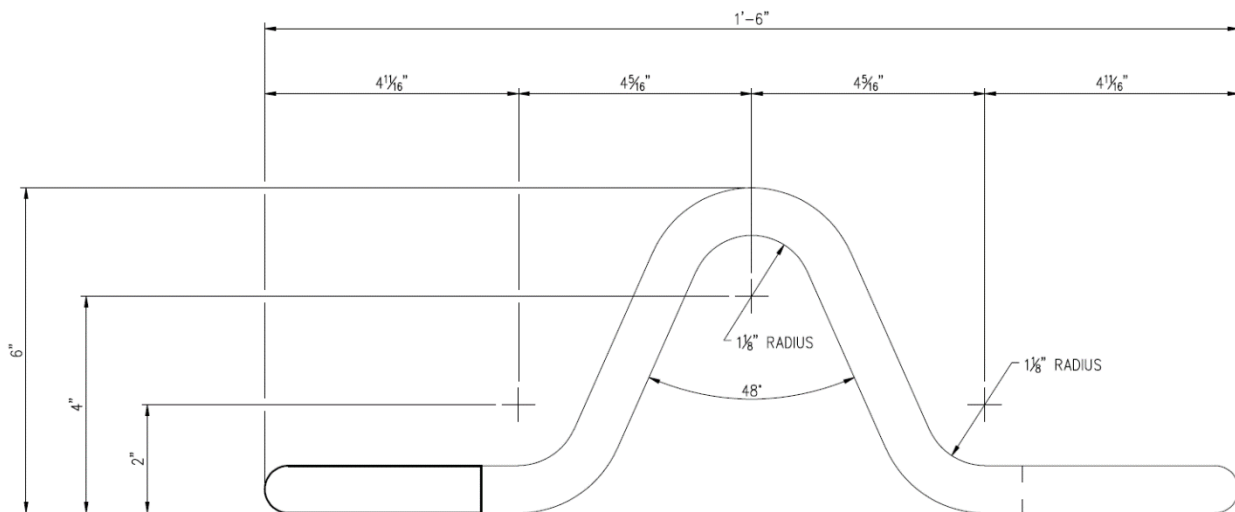
Pulling iron minimum working strength rating is qualified as in direct tension only and does not include magnification due to cable angles.

Pulling irons shall have the dimensions specified in figures 4.1a–4.1c.

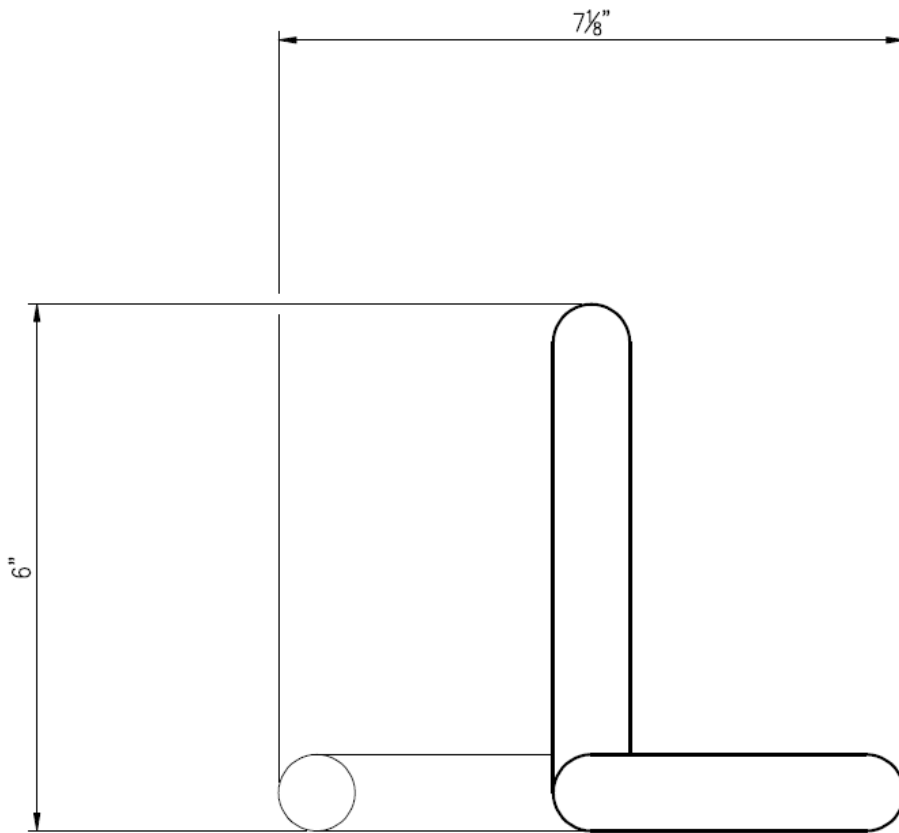
**Figure 4.1a. Pulling Iron Dimensions, Top View**



**Figure 4.1b. Pulling Iron Dimensions, Side View**



**Figure 4.1c. Pulling Iron Dimensions, End view**

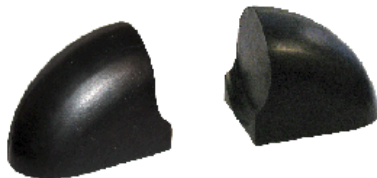


**4.2 Void Blockouts**

Void blockouts shall be designed to be used with the pulling irons specified in this standard.

Void blockouts shall be fabricated from rubber.

**Figure 4.2 Void Blockouts (pair)**

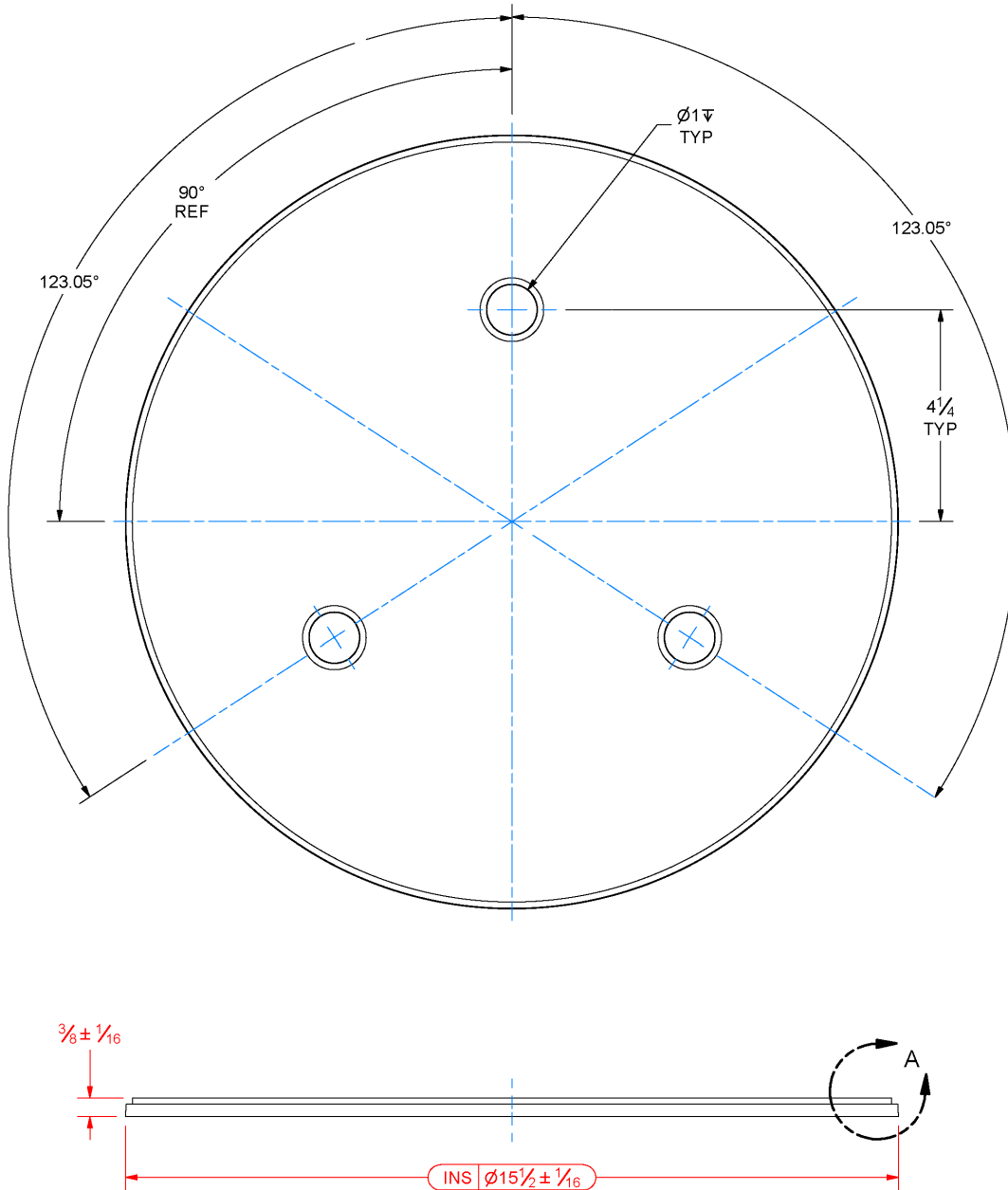


**4.3 Covers**

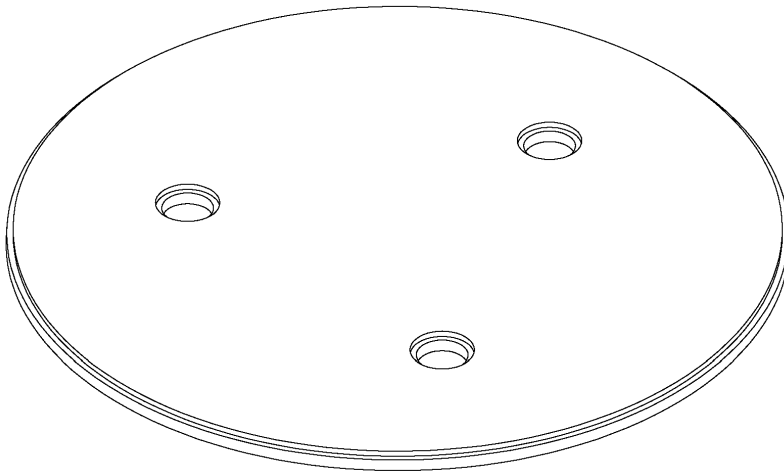
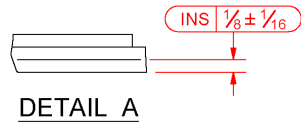
Covers shall be fabricated from fiberglass.

Covers shall have the dimensions specified in Figure 4.3.

**Figure 4.3. Cover Dimensions**



**Figure 4.3b. Cover Dimensions, Detail A**



**5. Packaging**

Pulling irons and their accessories shall be packaged to prevent damage during shipping, handling, and inside storage.

Individual packages shall be legibly marked with:

- Manufacturer name
- Manufacturer part number
- Product description
- Quantity
- SCL stock number

Shipping containers shall be legibly marked with:

- SCL purchase order number

**6. Issuance**

Stock Unit: EA

**7. Approved Manufacturers**

Stock No.	Description	Manufacturer	Catalog No.
720235	Pulling iron	Oldcastle Precast Inc.	5180150
720236	Cover	Oldcastle Precast Inc.	5580130
013525	Void block out (pair)	Oldcastle Precast Inc.	FORM. 9610PULLEYE

## 8. Sources

**SCL Stock Catalog page 70-57**; November 20, 2013

**Lu, Curtis**; SCL Standards Engineer and originator of 7203.89

**Utility Vault, Pull Iron-S.S. (SCL), Drawing Number 010-5180150-001**, dated 07/16/2007

**Oldcastle, PC SUMP COVER 15 1/2 DIA, Drawing Number 03500132**, dated 08/16/2008