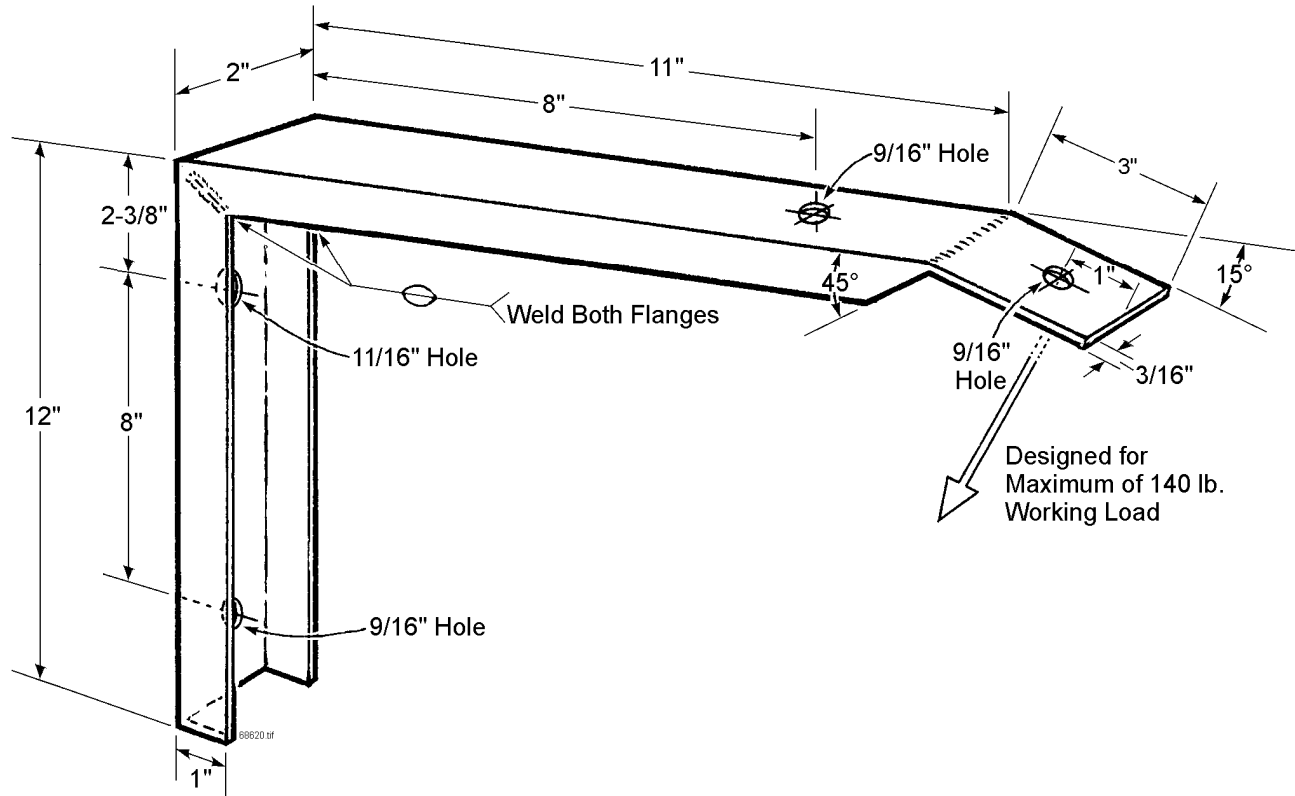


MATERIAL STANDARD

BRACKET, TERMINATOR (FOR PAT 1902, 1872, ALUMA FORM CS-820)



Terminator Brackets, shall be of the configuration and dimensions shown.

Material: The brackets shall be made of Merchant Quality, two-inch, steel channel that conforms to ASTM A 29, Grade M1020. The channel shall weigh 2.32 pounds per foot.

Galvanizing: The brackets shall be hot-dipped galvanized after fabrication, in accordance with ASTM A 123 and in accordance with City Light Material Standard 7240.1.

Reference Specifications: ASTM A 29, Grade M1020, and ASTM A 123, latest revisions.

Stock Unit: EA

Stock Number: 686200

ORIGINATOR	STANDARDS COORDINATOR	STANDARDS SUPERVISOR	UNIT DIRECTOR
<i>Jim S. Horn</i>	<i>Charles L. Shaffer</i>	<i>John C. Skinner</i>	<i>Harold J. Jey</i>