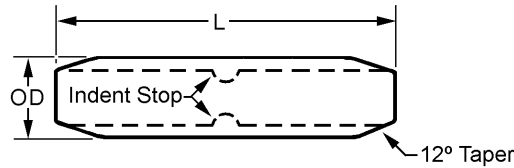


MATERIAL STANDARD

CONNECTORS - TAPERED COPPER COMPRESSION

1. **Description:** Tapered Copper Compression Connectors of the configuration shown are intended for use on 4 kV and higher insulated copper conductors in Underground Construction and shall meet the applicable requirements of NEMA CC1, *Electric Power Connectors*.



Conductor, AWG	Dimension, in.	
	OD	L
1	0.46	2-1/16
1/0	0.51	2-1/16
3/0	0.62	2-13/32
4/0	0.69	2-3/8

Conductor, kcmil	Dimension, in.	
	OD	L
300	0.81	2-5/8
350	0.88	2-25/32
500	1.06	3-17/32
600*	1.18	4-7/32
750	1.30	4-7/32
1000	1.50	4-31/32

*Use for 750 kcmil compact round.

- 2. **Material:** Connectors shall be made from tinned, high conductivity, seamless annealed copper.
- 3. **Construction:** An indent stop shall be provided at the center of the connector to ensure proper conductor insertion. The ends shall have a 12° taper.
- 4. **Marking:** Each connector shall have durable markings showing conductor size and manufacturer's name or trademark and catalog number of the connector.
- 5. **Reference Specification:** NEMA CC1, latest revision.
- 6. **Stock Unit:** EA
- 7. **Approved Manufacturers:**

Stock No.	Wire Size, AWG/kcmil	Approved Manufacturers				
		Burndy	Dossert	Homac	MAC	Richards
677337	1	-	-	TC-1	MTC 1	TCC 8
677338	1/0	-	DPC10-T	TC-1/0	MTC 1/0	TCC 9
677340	3/0	-	DPC17-T	TC-3/0	MTC 3/0	TCC 11
677341	4/0	YS28-T	DPC21-T	TC-4/0	MTC 4/0	TCC 12
677343	300	YS30-T	DPC30-T	TC-300	MTC 300	TCC 14
677345	350	YS31-T	DPC35-T	TC-350	MTC 350	TCC 15
677347	500	YS34-T	DPC50-T	TC-500	MTC 500	TCC 18
677348	600*	-	-	TC-600	MTC 600	TCC 20
677349	750	YS39-T	DPC75-T	TC-750	MTC 750	TCC 23
677351	1000	-	DPC100-T	TC-1000	MTC 1000	TCC 28

STANDARDS COORDINATOR

STANDARDS SUPERVISOR

UNIT DIRECTOR

Gold Shield

John Schinner

Hardee Juy

MATERIAL STANDARD

