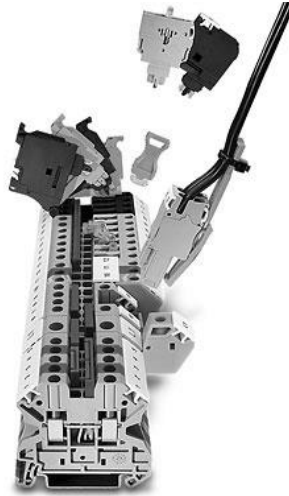


Terminal Block System Elements, DIN Rail, Modular



1. Scope

This standard covers the requirements for DIN rail modular terminal block systems. DIN stands for Deutsches Institut für Normung, the German Institute for Standardization. This standard applies to the Seattle City Light (SCL) stock numbers cited in Section 4.

2. Application

DIN rail modular terminal block systems are used in stations.

DIN rail modular terminal block systems require significantly less space for the same functionality as traditional terminal blocks.

Components can be mixed or matched with complete compatibility. Other companies manufacture DIN rail modular terminal block systems, but their components are not necessarily compatible with the components cited in this standard.

3. Industry Standards

DIN rail modular terminal block system components shall meet the applicable requirements of the latest revision of the following industry standards:

IEC EN 60715; Dimensions of low-voltage switchgear and controlgear standardized mounting on rails for mechanical support of electrical devices

Standard Coordinator
John Shipek

Standards Engineering Supervisor
John Shipek

Division Director
Tamara Jenkins

IEC EN 60947-7-1; Low-voltage switchgear and controlgear - Part 7-1: Ancillary equipment - Terminal blocks for copper conductors

IEC EN 60947-7-2; Low-voltage switchgear and controlgear - Part 7-2: Ancillary equipment - Protective conductor terminal blocks for copper conductors

IEC EN 60947-7-3; Low-voltage switchgear and controlgear - Part 7-3: Ancillary equipment - Safety requirements for fuse terminal blocks

IEC/EN 60079-7; Explosive atmospheres - Part 7: Equipment protection by increased safety "e"

DIN EN 50022; Low voltage switchgear and controlgear for industrial use; mounting rails, top hat rails, 35 mm wide, for snap-on mounting of equipment

4. Requirements

4.1 General

DIN rail modular terminal block system components shall be designed to mount on a DIN rail system conforming to DIN EN 50022: 1977 35 mm x 15 mm.

Metal surfaces shall be nickel- or tin-plated.

Nominal voltage class shall be 600 V.

4.2 DIN Rail, Unperforated: NS 35/15 AL UNPERF 2000MM

Stock No.:	012609
Manufacturer:	Phoenix Contact
Part No.:	1201756
Color:	Silver gray
Material:	Uncoated aluminum
Minimum Order Quantity:	5 meters
Dimensions (mm)	
Width:	35
Length:	2000
Height:	15
Application:	Used for setting up terminal blocks in a space-saving and easy-clamping fixture
Image:	



4.3 Bolt Connection Terminal Block: RT 3

Stock No.:	014892
Manufacturer:	Phoenix Contact
Part No.:	3049013
Voltage Rating, Nominal:	1000 V
Current Rating, Nominal:	24 A
Cross Section:	n/a
Color:	Gray
Minimum Order Quantity:	50

Dimensions (mm)	
Width:	12.3
End cover width:	2.2
Length:	66
Height (35/15):	58.5

Application:	Bolt connection terminal block Note: The BE-RT... path extension is to be used for non-insulated cable lugs.
---------------------	---



Image:

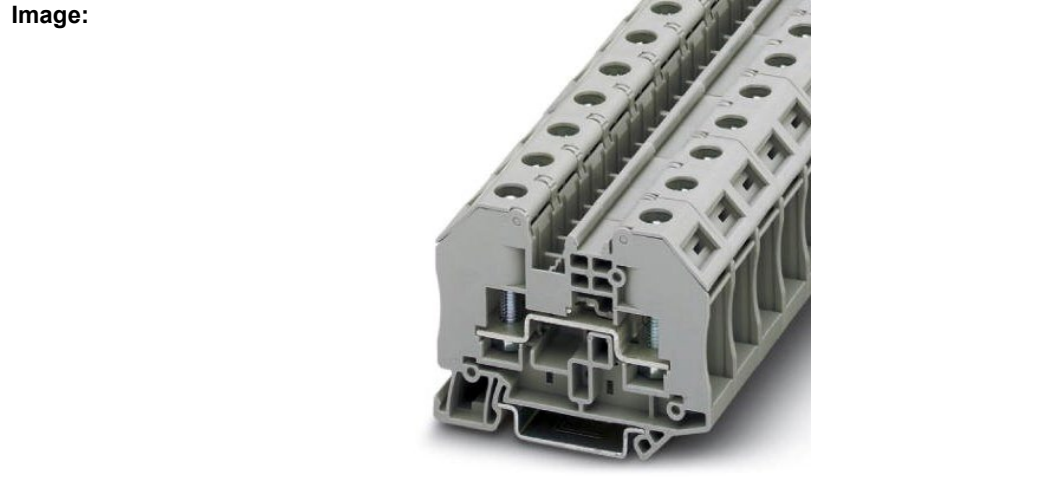
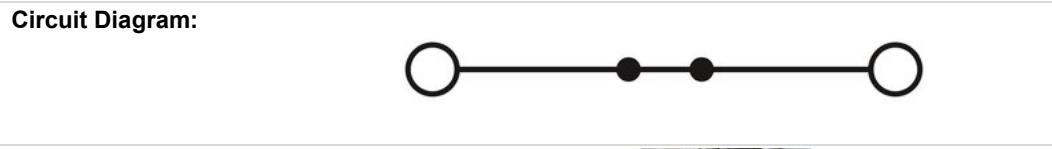


4.4 Bolt Connection Terminal Block: RT 5

Stock No.:	014893
Manufacturer:	Phoenix Contact
Part No.:	3049026
Voltage Rating, Nominal:	1000 V
Current Rating, Nominal:	41 A
Cross Section:	6 mm ²
Color:	Gray
Minimum Order Quantity:	50

Dimensions (mm)	
Width:	16.3
End cover width:	2.2
Length:	66
Height (35/15):	58.5

Application:	Bolt connection terminal block Note: The BE-RT... path extension is to be used for non-insulated cable lugs.
---------------------	---



4.5 Knife Disconnect Terminal Block: UT 4-QUATTRO-MT P/P

Stock No.:	014900
Manufacturer:	Phoenix Contact
Part No.:	3064056
Voltage Rating, Nominal:	500 V
Current Rating, Nominal:	20 A
Cross section:	2.5 mm ²
Color:	Gray
Minimum Order Quantity:	50

Dimensions (mm)	
Width:	6.2
End cover width:	2.2
Length:	65.4
Height (35/15):	56.6

Application:	Knife disconnect terminal block, with test socket screws for insertion of test plugs
---------------------	--

Circuit Diagram:

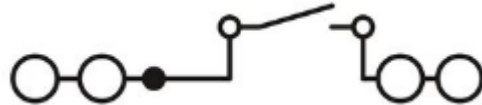


Image:



4.6 Knife Disconnect Terminal Block: UT 4-QUATTRO-MT P/P BU

Stock No.:	014901
Manufacturer:	Phoenix Contact
Part No.:	3073036
Voltage Rating, Nominal:	500 V
Current Rating, Nominal:	20 A
Cross section:	2.5 mm ²
Color:	Blue
Minimum Order Quantity:	50

Dimensions (mm)	
Width:	6.2
End cover width:	2.2
Length:	65.4
Height (35/15):	49.1

Application:	Knife disconnect terminal block, with test socket screws for insertion of test plugs
---------------------	--

Circuit Diagram:

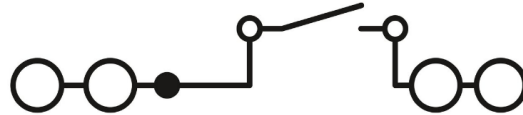
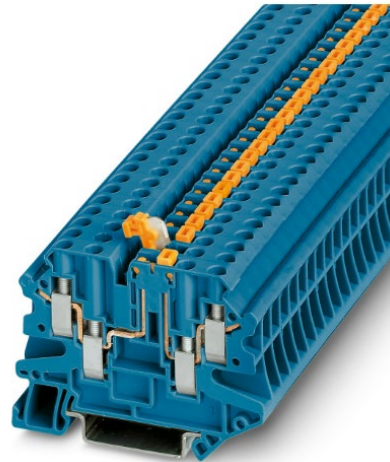


Image:

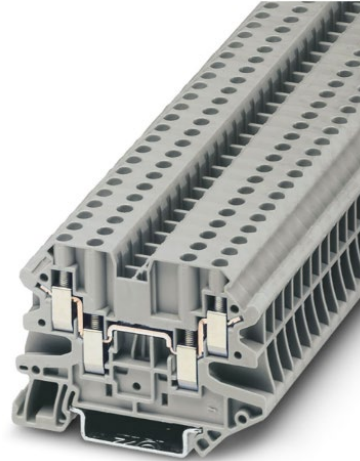


4.7 Feed-Through Terminal Block: UT 4-QUATTRO

Stock No.:	014902
Manufacturer:	Phoenix Contact
Part No.:	3044571
Voltage Rating, Nominal:	500 V
Current Rating, Nominal:	32 A
Cross section:	4 mm ²
Color:	Gray
Minimum Order Quantity:	50
Dimensions (mm)	
Width:	6.2
End cover width:	2.2
Length:	65.4
Height (35/15):	55
Application:	Feed-through terminal block, screw connection
Circuit Diagram:	



Image:



4.8 Feed-Through Terminal Block: UT 4-QUATTRO


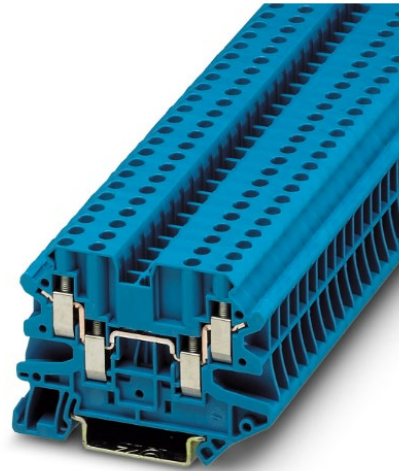
Stock No.:	014903
Manufacturer:	Phoenix Contact
Part No.:	3044584
Voltage Rating, Nominal:	500 V
Current Rating, Nominal:	32 A
Cross section:	4 mm ²
Color:	Blue
Minimum Order Quantity:	50
Dimensions (mm)	
Width:	6.2
End cover width:	2.2
Length:	65.4
Height (35/15):	55
Application:	Feed-through terminal block, screw connection
Circuit Diagram:	

Image:



4.9 Bolt Connection Terminal Block: RT 5-PE

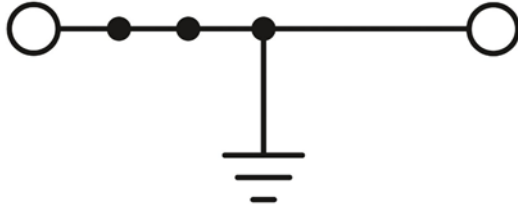
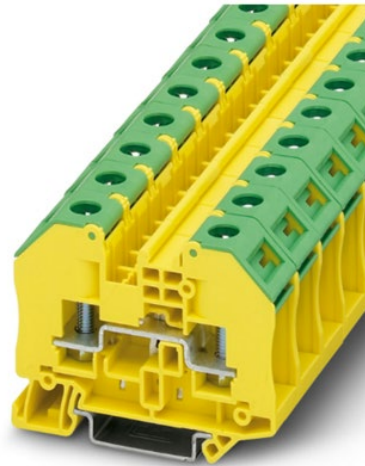
Stock No.:	014904
Manufacturer:	Phoenix Contact
Part No.:	3049424
Voltage Rating, Nominal:	1000 V
Current Rating, Nominal:	41 A
Cross section:	6 mm ²
Color:	Green-yellow
Minimum Order Quantity:	50
Dimensions (mm)	
Width:	16.3
End cover width:	2.2
Length:	66
Height (35/15):	58.5
Application:	Ground terminal block with bolt connection
Circuit Diagram:	

Image:



4.10 Fuse Modular Terminal Block: USIG

Stock No.:	012611
Manufacturer:	Phoenix Contact
Part No.:	0920083
Voltage Rating, Nominal:	500 V
Current Rating, Nominal:	10 A as determined by the fuse used; 40 A as a disconnect terminal block
Cross section:	1.5 mm ²
Color:	Black
Minimum Order Quantity:	n/a
Dimensions (mm)	
Width:	10.2
End cover width:	n/a
Length:	61
Height (35/15):	59.1
Application:	Fuse modular terminal block, without fuse plug
Circuit Diagram:	

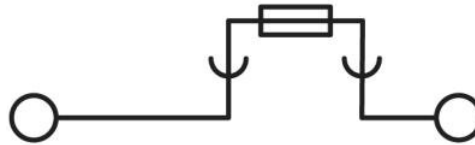


Image:



4.11 Fuse Modular Terminal Block: UK

Stock No.:	014891
Manufacturer:	Phoenix Contact
Part No.:	3048661
Voltage Rating, Nominal:	72 V
Current Rating, Nominal:	32 A as determined by the fuse used
Cross section:	16 mm ²
Color:	Black
Minimum Order Quantity:	10

Dimensions (mm)	
Width:	18
End cover width:	n/a
Length:	81
Height (35/15):	73

Application:	Fuse modular terminal block, without fuse plug, for fuses measuring 13/32" x 1-1/2" (See SCL 6855.35)
---------------------	---

Circuit Diagram:

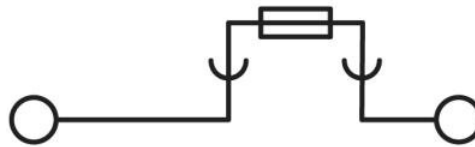


Image:



4.12 Fuse Plug: ST-SI

Stock No.:	012612
Manufacturer:	Phoenix Contact
Part No.:	0920229
Voltage Rating, Nominal:	400 V
Current Rating, Nominal:	6.3 A
Cross section:	n/a
Color:	Black
Minimum Order Quantity:	50
Dimensions (mm)	
Width:	9.9
End cover width:	n/a
Length:	45.4
Height (35/15):	n/a
Application:	Fuse plug for meter circuits
Image:	



4.13 End Cover: D-UT 2,5/4-QUATTRO

Stock No.:	014905
Manufacturer:	Phoenix Contact
Part No.:	3047170
Voltage Rating, Nominal:	n/a
Current Rating, Nominal:	n/a
Cross section:	n/a
Color:	Gray
Minimum Order Quantity:	1 packing unit of 50
Dimensions (mm)	
Width:	2.2
End cover width:	2.2
Length:	64.4
Height (35/15):	39.8
Application:	End cover
Circuit Diagram:	n/a
Image:	



4.14 End Clamp: E/NS 35 N

Stock No.:	014910
Manufacturer:	Phoenix Contact
Part No.:	0800886
Voltage Rating, Nominal:	n/a
Current Rating, Nominal:	n/a
Cross section:	n/a
Color:	Gray
Minimum Order Quantity:	50
Dimensions (mm)	
Width:	9.5
End cover width:	n/a
Length:	48.6
Height (35/15):	32.8
Application:	End clamp, mounting on a DIN rail NS 35
Image:	



4.15 End Cover: D-RT 3/5

Stock No.:	014896
Manufacturer:	Phoenix Contact
Part No.:	3049097
Voltage Rating, Nominal:	n/a
Current Rating, Nominal:	n/a
Cross section:	n/a
Color:	Gray
Minimum Order Quantity:	50
Dimensions (mm)	
Width:	2.2
Length:	65
Height (35/15):	50.4
Application:	End cover, mounting on a DIN rail NS 35
Image:	



4.16 Marker for Terminal Blocks: UCT-TM 6

Stock No.:	014894
Manufacturer:	Phoenix Contact
Part No.:	0828736
Voltage Rating, Nominal:	n/a
Current Rating, Nominal:	n/a
Cross Section:	n/a
Color:	White
Minimum Order Quantity:	10
Number of Individual Labels	60
Number of Individual Labels Per Row:	10
Application:	For use with Quattro labels. Sheet can be labeled with: TOPMARK NEO, TOPMARK LASER, BLUEMARK ID COLOR, BLUEMARK ID, BLUEMARKCLED, THERMOMARK PRIME, THERMOMARK CARD 2.0, THERMOMARK CARD, mounting type: snap into tall marker groove, for terminal block width: 6.2 mm, lettering field size: 5.6 x 10.5 mm.

Image:



4.17 Marker for Terminal Blocks: UCT-TM 8

Stock No.:	014895
Manufacturer:	Phoenix Contact
Part No.:	0828740
Voltage Rating, Nominal:	n/a
Current Rating, Nominal:	n/a
Cross Section:	n/a
Color:	White
Minimum Order Quantity:	10
Number of Individual Labels:	42
Number of Individual Labels Per Row:	7
Application:	For use with RT 3 edge labels. Sheet can be labeled with: TOPMARK NEO, TOPMARK LASER, BLUEMARK ID COLOR, BLUEMARK ID, BLUEMARK CLED, THERMOMARK PRIME, THERMOMARK CARD 2.0, THERMOMARK CARD, mounting type: snap into tall marker groove, for terminal block width: 8.2 mm, lettering field size: 7.6 x 10.5 mm.

Image:



4.18 Marker for Terminal Blocks: UCT-TM 12

Stock No.:	014897
Manufacturer:	Phoenix Contact
Part No.:	0829144
Voltage Rating, Nominal:	n/a
Current Rating, Nominal:	n/a
Cross section:	n/a
Color:	White
Minimum Order Quantity:	10
Number of Individual Labels:	30
Number of Individual Labels Per Row:	5
Application:	For use with RT 3 center labels or RT 5 center and edge labels. Sheet can be labeled with: TOPMARK NEO, TOPMARK LASER, BLUEMARK ID COLOR, BLUEMARK ID, BLUEMARK CLED, THERMOMARK PRIME, THERMOMARK CARD 2.0, THERMOMARK CARD, mounting type: snap into tall marker groove, for terminal block width: 12 mm, lettering field size: 10.8 x 9.6 mm.

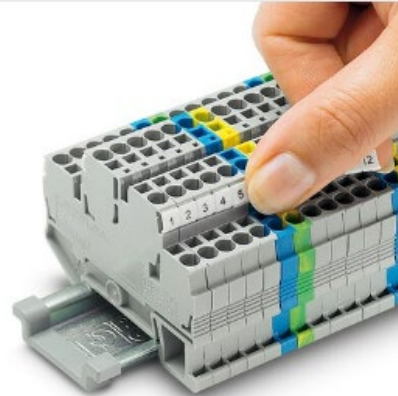
Image:



4.19 Marker for Terminal Blocks: UCT-TMF 10

Stock No.:	014899
Manufacturer:	Phoenix Contact
Part No.:	0829204
Voltage Rating, Nominal:	n/a
Current Rating, Nominal:	n/a
Cross Section:	n/a
Color:	White
Minimum Order Quantity:	1
Number of Individual Labels:	36
Number of Individual Labels Per Row:	6
Application:	For use with fuse block labels. Sheet can be labeled with: TOPMARK NEO, TOPMARK LASER, BLUEMARK ID COLOR, BLUEMARK ID, BLUEMARK CLED, THERMOMARK PRIME, THERMOMARK CARD 2.0, THERMOMARK CARD, mounting type: snapped, for terminal block width: 10.2 mm, lettering field size: 9.4 x 4.7 mm.

Image:



4.20 Terminal Strip Marker Carrier: KLM-A

Stock No.:	014898
Manufacturer:	Phoenix Contact
Part No.:	1004348
Material:	ABS
Color:	Transparent
Minimum Order Quantity:	100
Dimensions (mm)	
Width:	9.5
Height NS 35/7,5:	19
Length:	46
Application:	Terminal strip markers, for strip marking, adjustable height, for use with end clamps E/UK, E/NS 35 N or CLIPFIX 35, lettering field size: 44 x 7 mm

Image 1:



Image 2:



5. Packaging

DIN rail modular terminal block system components shall be packaged and shipped assembled.

DIN rail modular terminal block system components shall be packaged to prevent damage during shipping, handling, and inside storage.

Individual packages shall be legibly marked with:

- Manufacturer identification
- Product description
- Seattle City Light stock number

Each shipping container shall be legibly marked with the following information:

- Seattle City Light purchase order number

6. Issuance

Stock unit: EA

7. Approved Manufacturers

See Section 4.

8. Sources

Cohn, Cole; SCL PACE II Relay and subject matter expert for 6771.45

Hughes, Michael; SCL South Stations Coordinator and subject matter expert for 6771.45

SCL Material Standard 2903.20; Terminal Block, DIN Modular System (canceled and renumbered to 6771.45 in October 2015)

Shipek, John; SCL Standards Supervisor, originator, and subject matter expert for 6771.45

www.phoenixcontact.com/en-in/products/installation-and-mounting-material/fixing-material