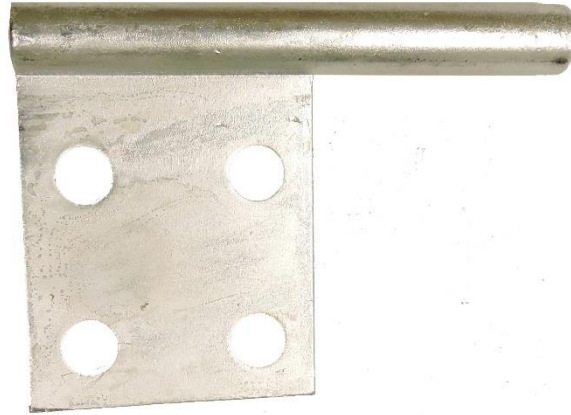


Transformer Connectors, Multiple Tie, Copper



1. Scope

This standard covers the requirements for copper, multiple tie, transformer connectors. This standard applies to Seattle City Light (SCL) Stock No. 676150.

2. Application

Transformer connectors, also known as “flags” are used to connect multiple copper conductors to a single transformer secondary terminal.

Transformer connectors are placed in the secondary terminal with the flag above or below the terminal, preferably below, to keep the conductors out of the way.

Transformer connectors are used in conjunction with either SCL Stock No. 676120 or 676123.

3. Industry Standards

Transformer connectors shall meet the applicable requirements of the latest revision of the following industry standards:

ANSI C119.4, American National Standard for Electric Connectors— Connectors for Use between Aluminum-to-Aluminum and Aluminum-to-Copper Conductors Designed for Normal Operation at or Below 93°C and Copper-to-Copper Conductors Designed for Normal Operation at or Below 100°C

NEMA CC1, Electric Power Connection for Substations

4. Requirements

Transformer connectors shall have the following attributes:

- Made of copper or copper alloy
- Tin-plated
- Four-hole NEMA pad
- Contact surface on both sides of pad
- Design and dimensions according to Table 4 and Figure 4.

Figure 4. Transformer Connector Dimensions

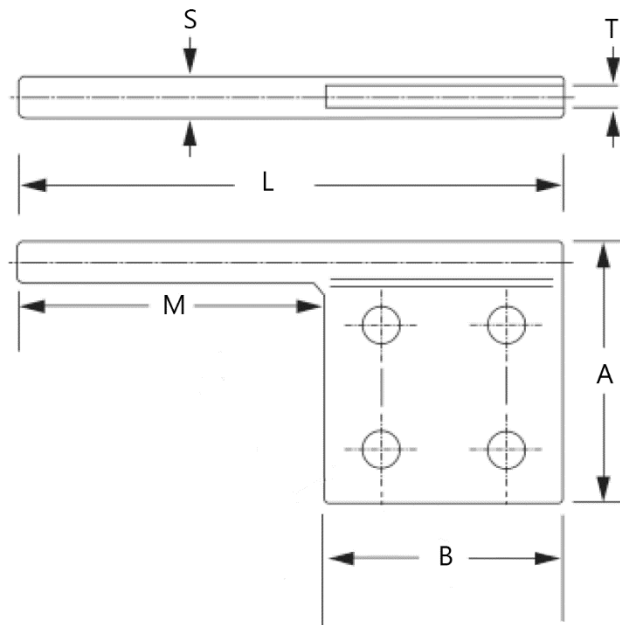


Table 4. Transformer Connector Dimensions (in)

Pin Diameter (S)	Total Pin Length (L)	Exposed Pin Length (M)	Connector Width (A)	Pad Length (B)	Pad Thickness (T)
3/4	5-15/16	2-1/2	3-13/16	3-7/16	3/8

5. Marking

Transformer connectors shall be legibly marked with the following:

- Manufacturer name or trademark
- Catalog number

6. Packaging

Transformer connectors shall be packaged to prevent damage during shipping, handling, and storage.

Each standard package shall be legibly marked with the following information:

- Manufacturer identification
- Product Catalog part number
- Product description
- Seattle City Light stock number

Each shipping container shall be legibly marked with the following information:

- Seattle City Light purchase order number
-

7. Issuance

EA

8. Approved Manufacturers

Manufacturer	Catalog No.
Penn-Union	FT-4-075
ABB / Thomas & Betts / Homac	CEA 4-75
AFL (formerly Dossert)	MTR2C-75

9. Sources

Stock Catalog Page 65-19; January 08, 2010

www.abb.com

www.aflglobal.com

www.penn-union.com

Wang, Quan; SCL Standards Engineer, originator, and subject matter expert for 6689.09
(quan.wang@seattle.gov)