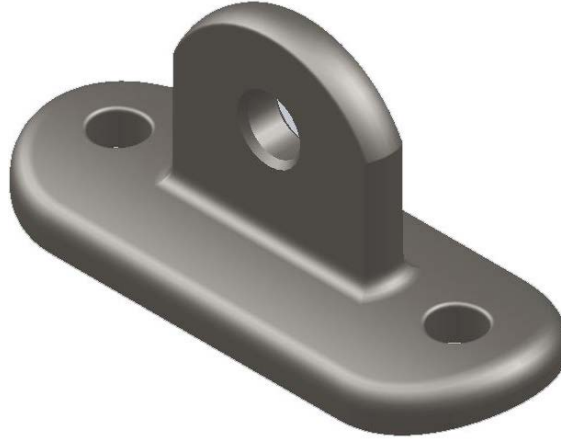


## Pole Eye Plates for Fiberglass Poles



### 1. Scope

This standard covers the requirements for smooth (toothless) curved pole eye plates. This standard applies to Seattle City Light (SCL) Stock No. 013862.

### 2. Application

Smooth curved pole eye plates are intended for use on fiberglass poles where high-strength interface connections are required for guying and other deadend attachments or assemblies (thimble clevises, insulators, shackles, etc.) Pole eye plates are toothless to prevent damage to the fiberglass pole surface.

This product **shall not** be used on flat surfaces.

The minimum strength values cited in Table 4b equate to ultimate strength values commonly cited by manufacturers.

### 3. Industry Standards

Pole eye plates shall meet the applicable requirements of the latest revision of the following industry standards:

**ASTM A47**; "Standard Specification for Ferritic Malleable Iron Castings"

**ASTM A123**; "Standard Specification for Zinc (Hot-Dip Galvanized) Coatings on Iron and Steel Products"

**ASTM A153/153M**; "Standard Specification for Zinc Coating (Hot-Dip) on Iron and Steel Hardware"

**ASTM A536**; "Standard Specification for Ductile Iron Casting"

**IEEE C135.90**; "Standard for Pole Line Hardware for Overhead Line Construction"

#### 4. Requirements

Mounting holes on pole eye plates shall be single holes. Slotted holes will not be accepted.

Pole eye plates shall be ductile iron and hot dip galvanized.

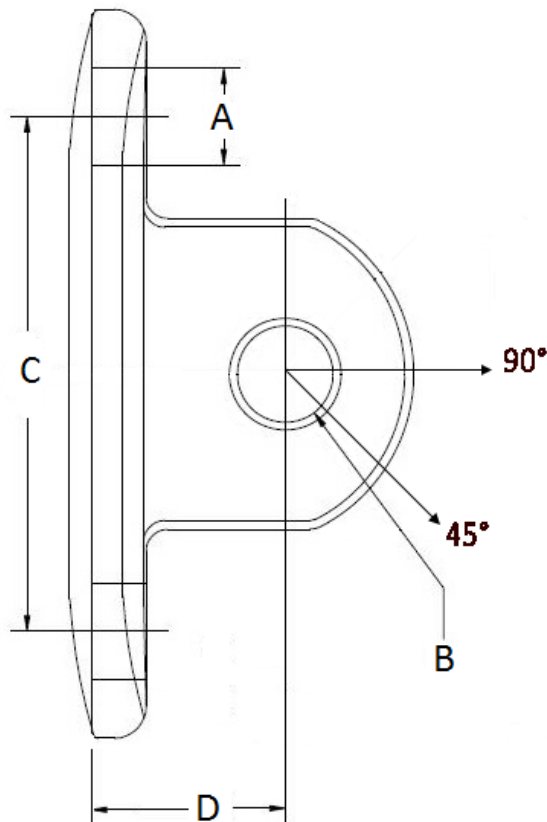
Pole eye plates shall be free of gouges, burrs, sharp edges, and sharp corners.

The concave, curved surface that makes contact with the fiberglass pole shall be smooth (toothless).

Pole eye plates shall accommodate pull-off angles from 0 to 90 degrees.

Pole eye plates shall conform to the dimensions and tolerances specified in IEEE C135.90 and shown in Figure 4 and Table 4a.

**Figure 4. Pole Eye Plate Dimensions**



**Table 4a. Pole Eye Plate Dimensions (Inches)**

Dimension	Size	Max	Min
A	13/16	7/8	13/16
B	15/16	1	15/16
C	6	6-1/16	5-15/16
D	13/16	13/16	11/16

**Table 4b. Pole Eye Plate Minimum Strength**

Angle (degrees)	Minimum Strength (lb)
45	36,000
90	30,000

---

## 5. Markings

Markings for each pole eye plate shall include, but not be limited to, the following:

- Company name or logo
- Part identification

---

## 6. Packaging

Each standard package shall be legibly marked with the following information:

- Manufacturer identification
- Product description
- Seattle City Light stock number
- Quantity contained

Each shipping container shall be legibly marked with the following information:

- Manufacturer identification
- Product description
- Seattle City Light purchase order number
- Seattle City Light stock number

---

## 7. Issuance

Stock Unit: EA

---

## 8. Approved Manufacturers

Manufacturer	Catalog No.
MacLean Power Systems	DETR60K-67
Hughes Brothers	2817R4.5-13-15

---

## 9. Sources

**Neuansourinh, Ponet**; SCL Standards Engineer and originator of 5651.28  
(ponet.neuansourinh@seattle.gov)

**Quan Wang**; SCL Senior Electrical Engineering Specialist and subject matter expert for 5651.28 (quan.wang@seattle.gov)

**Tilley, Kathy**; SCL Electrical Engineering Support Specialist and subject matter expert for 5651.28 (kathy.tilley@seattle.gov)