

Pole Eye Plates for Wood Poles, 3/4-Inch Bolt



1. Scope

This standard covers the requirements for pole eye plates installed on wood poles with a 3/4-in bolt.

This standard applies to Seattle City Light (SCL) Stock No. 565198.

For the 1-in bolt version, see SCL 5651.26.

2. Application

Pole eye plates are used to attach span or down guys to wood poles.

The minimum strength values cited in Table 4b equate to ultimate strength values commonly cited by manufacturers.

The pole eye plates cited in this standard should not be installed on flat surfaces or fiberglass poles.

3. Industry Standards

Pole eye plates shall meet the applicable requirements of the following industry standards:

ASTM A47 (2014); "Standard Specification for Ferritic Malleable Iron Castings"

ASTM A123 (2015); "Standard Specification for Zinc (Hot-Dip Galvanized) Coatings on Iron and Steel Products"

ASTM A153/153M (2016); "Standard Specification for Zinc Coating (Hot-Dip) on Iron and Steel Hardware"

ASTM A536 (2014); "Standard Specification for Ductile Iron Casting"

IEEE C135.90 (2014); "Standard for Pole Line Hardware for Overhead Line Construction"



4. Requirements

Pole eye plates shall:

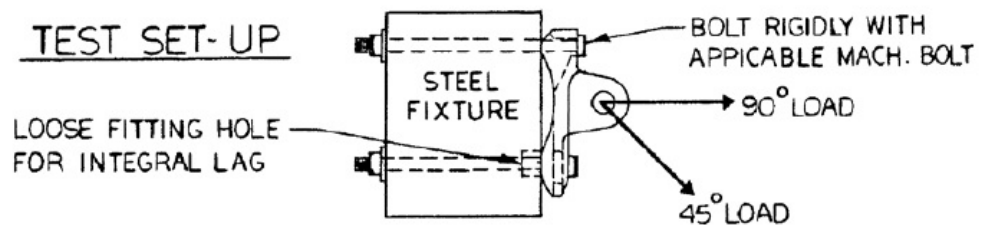
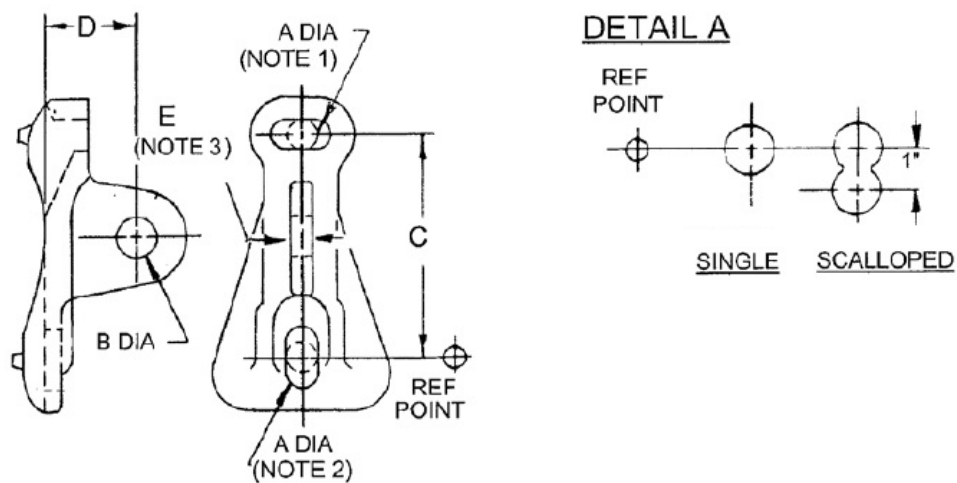
- Conform to the dimensions and tolerances specified in IEEE C135.90 and shown in Figure 4 and tables 4a and 4b.
- Have integral spurs or teeth at the pole contact surface to resist movement.
- Be ductile iron and hot-dip galvanized.
- Be free of gouges, burrs, sharp edges, and sharp corners.
- Accommodate pull-off angles from 0 to 90 degrees.

Top mounting holes on the pole eye plates shall be a single hole.

Bottom mounting holes on the pole eye plates shall be scalloped.

Mounting holes on the pole eye plates shall accommodate a 3/4-in bolt.

Figure 4. Pole Eye Plate Dimensions



Notes

1. Single hole, top mount position
2. Scalloped hole, bottom mount position
3. Thickness of eye at center of hole B

Table 4a. Pole Eye Plate Dimensions (Inches)

Dimension	Size	Max	Min
A	13/16	7/8	13/16
B	13/16	7/8	13/16
C	4	4-1/16	3-15/16
E	3/4	3/4	5/8

Table 4b. Pole Eye Plate Minimum Strength

Angle (degrees)	Minimum Strength (lb)
45 or 90	20,000

5. Markings

Markings for each pole eye plate shall include, but not be limited to, the following:

- Manufacturer identification
- Country of origin
- Part identification

6. Packaging

Each standard package shall be legibly marked with the following information:

- Manufacturer identification
- Product description
- Seattle City Light stock number
- Quantity contained

Each shipping container shall be legibly marked with the following information:

- Manufacturer identification
- Product description
- Seattle City Light purchase order number
- Seattle City Light stock number

7. Issuance

Stock Unit: EA

8. Approved Manufacturers

Manufacturer	Catalog No.
Hubbell/Anderson	GSP-05
Hubbell/Chance	GEP-8
MacLean Power Systems	REP-66-45
Richards	RPE88

9. References

SCL Material Standard 5651.26; "Pole Eye Plates for Wood Poles, 1-Inch Bolt"

10. Sources

Neuansourinh, Ponet; SCL Standards Engineer, originator, and subject matter expert for 5651.24 (ponet.neuansourinh@seattle.gov)