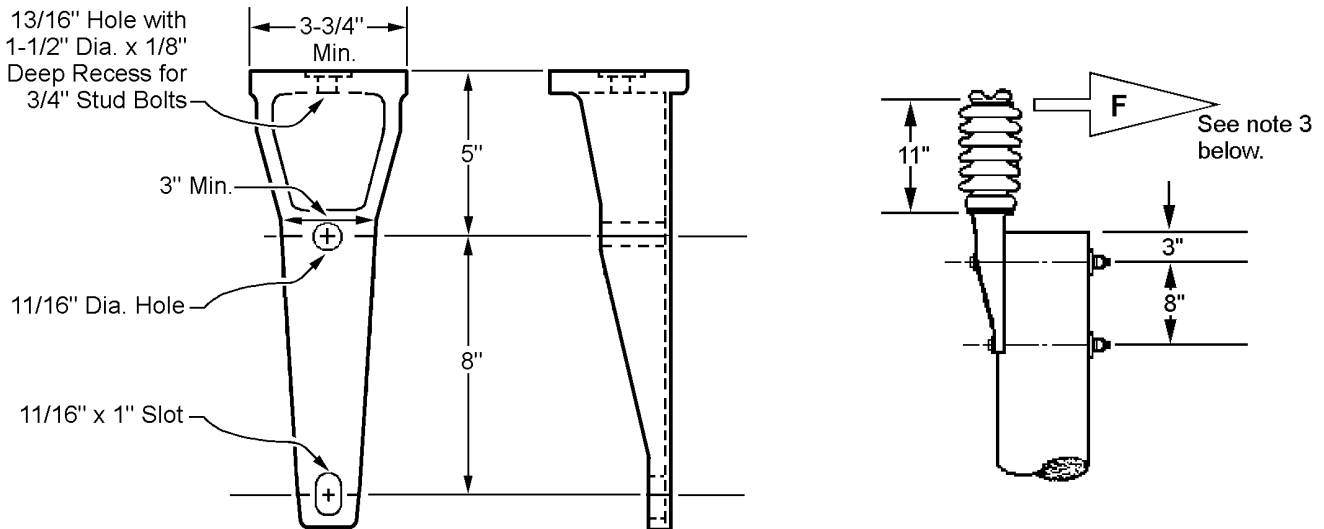


Bracket, Pole-Top Post Insulator



1. **General.** Pole-top post insulator brackets shall be of the configuration shown above (reasonable variations are acceptable). The brackets shall accommodate 34.5 kV post-type insulators; ANSI C27.7 Class 57-2S or 57-12S.
2. **Material.** The brackets shall be made of one of the following:
 - (a) Malleable iron per ASTM A47, galvanized per ASTM A153 (3 mils minimum)
 - (b) Ductile iron per ASTM A536, galvanized per ASTM A153 (3 mils minimum)
 - (c) Steel channel per ASTM A36, galvanized per ASTM A153 (3 mils minimum) (for steel channel brackets, particular attention should be given to the requirement for the stud bolt recess on the top)
 - (d) 356-T6 cast aluminum alloy
3. **Strength.** The bracket shall withstand a force (*F*) of 2,800 pounds (12,500 N) when gradually applied to the neck of an insulator as shown above.

Reference: ANSI C27.7; ASTM A36, A47, A153, A536

Stock Unit: EA

Approved Manufacturers

Stock Number	MacLean	Travis Pattern & Foundry, Inc.
563253	PTB55-8 or P532	IND-BPT-5-8-FE

Standard Coordinator
 Quan Wang

Standards Engineering Supervisor
 John Shipek

Division Director
 Andrew Strong